

Fig 1. Side view of SN293/WL/57 stair nosing.

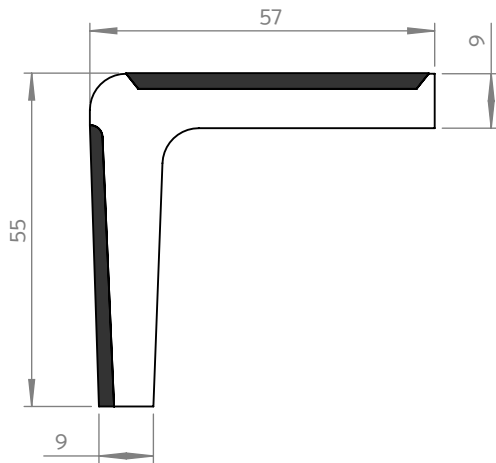
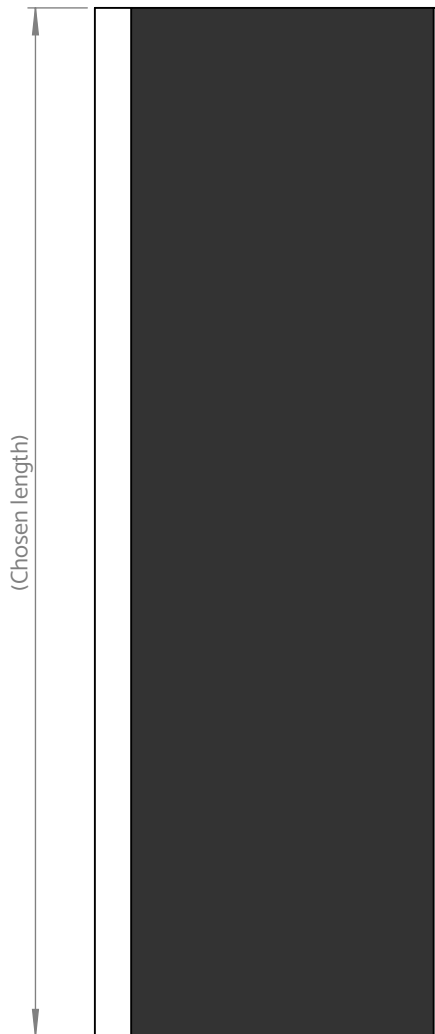


Fig 2. Plan view of SN293/WL/57 stair nosing.



Item: AATi™ type SN293/WL/57® - **Wideline™**: cast metal anti-slip stair nosing with unique silicon carbide granules cast into the metal matrix of the wearing surface. The front edge is defined by a continuous coloured abrasive insert and a continuous coloured line along the riser face. This is a protected and registered design:

® - Protected by European Registered Design No. 002178 178-0005/6.

™ - Wideline Trademark registration No. 011592 904.

Application: For extremely heavily used public stairways requiring high anti-slip and anti-wear performance. This robust cast metal anti-slip stair nosing profile offers exceptional slip resistant properties and ensures safe performance in wet or dry conditions. This nosing profile is suitable for many different applications including London Underground stations, Crossrail stations, mass transport terminals, Network Rail stations, AFA bridges, light Rail, commercial developments, stadiums and countless more.

Materials: Cast Nickel Bronze, cast Gunmetal and cast Aluminium. Different materials increase the longevity of the product, please speak to AATi technical team for further information.

Environment: Metals are sustainably sourced coming from predominantly recycled origins and all the metals we use through our production process can be 100% recycled in our factory.

Cut to suit: Stair nosing's can be produced to suit any stair width (**Fig 2**). Individual profiles can be made up to 1900mm in Cast Aluminium, Nickel Bronze and Gunmetal, longer lengths shall be supplied in multiple pieces. All products are supplied cut to length, pre-drilled and countersunk ready for fixing. Production drawings are submitted for approval prior to manufacture.

Compliance: This stair nosing design complies with DFT, British Standards BS 8300 & Building Regulations (Document M & K). Please speak to our technical team to assist with selecting the correct product and material for your application and for information on light reflectance values.

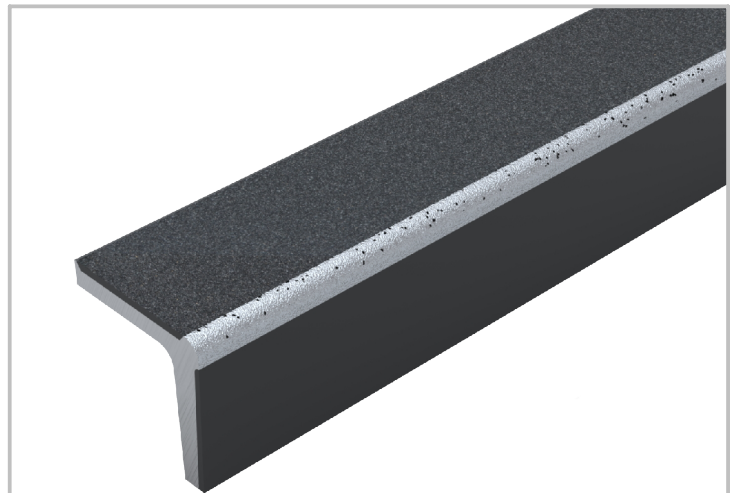


Fig 3. 3D view SN293/WL/57 stair nosing.

NB: Nosing's must be installed in such a way that standing water is omitted. Please refer to AATi O&M Manual
All AATi products are subject to our manufacturing tolerances and should be taken into consideration when installing