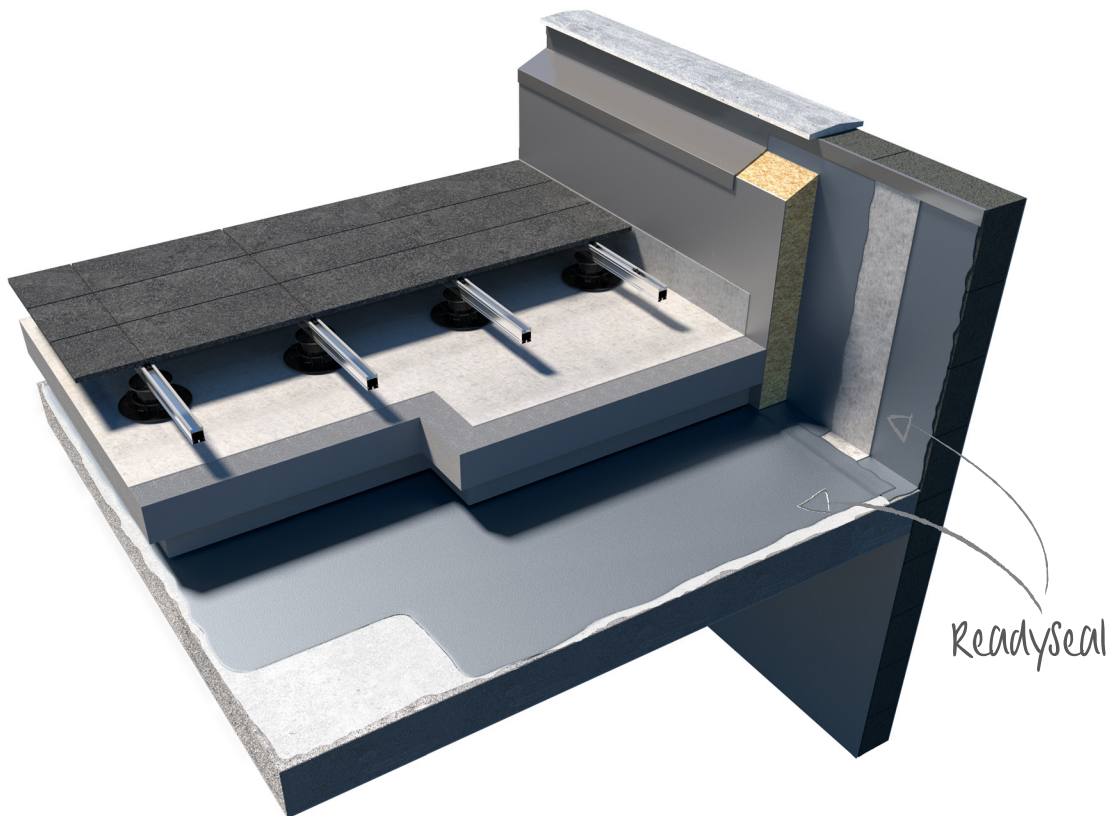


ReadySeal Waterproofing Membrane

Product Data Sheet



ReadySeal

Waterproofing Membrane

General Information

ReadySeal is a BBA Certified one component silane-terminated polyether liquid applied waterproofing membrane. Suitable for use as a roof waterproofing membrane on warm, cold, inverted and green roofs in flat roof, pitched roof, roof terrace, podium deck, balcony* and walkway* applications including protected zero fall specifications.

When used as part of a roof system classified under BS EN 13501-5 ReadySeal achieves Broof(t4), contact Radmat Building Products for certification information and build-ups.

Plasticiser, cyanate, and solvent free ReadySeal has a BBA assessed service life of in excess of 30 years.

For a comprehensive NBS J31 specification contact Radmat Building Products.

* including enclosed balconies over heated space, insulated walkways and specified attachments such as projecting open balconies, projecting enclosed balconies, recessed open balconies or recessed enclosed balconies.

Properties in relation to fire

- ReadySeal achieves Broof(t4) classification to BS EN 13501-5, contact Radmat Building Products for certification information and tested roof build-ups.
- ReadySeal achieves Broof(t4) when finished with any of the surface finishes stated in Commission Decision 2000/553/ EC (loose laid gravel with a thickness of at least 50 mm or a mass $\geq 80 \text{ kg/m}^2$ (minimum aggregate size 4 mm, maximum 32 mm), sand/ cement screed to a thickness of at least 30 mm, or cast stone or mineral slabs of at least 40 mm thickness.

Certificates

BBA Certification No. 20/5797

Durability

BBA assessed service life of in excess of 30 years.

Product uses:

- New Build and Refurbishment applications
- Inverted roof specification on flat and zero fall roofs with limited access or pedestrian access
- Protected warm and cold roof specifications e.g. covered by pavers or other suitable protection on flat and zero fall roofs with limited or pedestrian access
- Green roof specifications (extensive) on pitched, flat and zero fall roofs with limited access
- Exposed warm and cold roof specifications on flat and pitched roofs with limited access
- Roof terraces
- Podium decks
- Protected enclosed balconies over heated space
- Protected Insulated walkways
- Protected Specified Attachments such as projecting open balconies, projecting enclosed balconies, recessed open balconies or recessed enclosed balconies
- As an overlay waterproofing to existing asphalt and bitumen felt roofs (may require priming)
- As the primary waterproofing or to upgrade roof gutters, metal or fibre cement sheeting and cement particle panels

Product features:

- One component without mixing
- Plasticiser free
- Cyanate free

ReadySeal

Waterproofing Membrane

General Information (cont)

Substrates:

- Concrete, cured or uncured*
- Cementitious screeds, including latex modified*
- Bituminous roofing membranes, including mineral surfaced*
- Asphalt based coatings or membranes*
- Steel*
- Plywood to the requirements of BS 6229:2018
- Oriented Strand Board (OSB) to the requirements of BS 6229:2018
- Glass or glassy surfaces*
- Bright and matt ceramic surfaces*
- Aluminium*
- Galvanised iron sheets*
- Copper*
- Zinc*
- Slate or stone coated bituminous membranes*
- Ceramic or natural stones such as marble/granite/travertine applied surfaces*

* may require priming

Components:

- **ReadySeal** – a single part, solvent free, silane-terminated polyether liquid applied waterproofing
- **Radmat G120 fleece** - a needle punched glass fibre reinforcement for embedding into ReadySeal to aid in the reinforcement of construction details, flashing joints, cracks and gaps
- **ReadySeal Concrete Primer** – a one-part primer for concrete
- **ReadySeal Blocker Primer** – a two-part primer used to prepare new and old reinforced bitumen membranes, dry and wet concrete and steel substrate prior to the installation of ReadySeal
- **ReadySeal Surface Primer** – a one-part primer used to prepare part cured ReadySeal for the application of a new coat of ReadySeal
- **ReadySeal Pre-Wipes** – pre-wetted wipes used to prepare part cured ReadySeal for the application of ReadySeal Surface Primer

ReadySeal

Waterproofing Membrane

Directions of Application

Preparation

- Application surfaces should be free of dust, loose particles, oil, waste etc. Use of an electric vacuum cleaner is advisable. Wash the surface with clean water if necessary. Dry before ReadySeal and/or primer application.
- Cracks on the surface should be repaired with suitable materials.
- Expansion joints and other materials must be checked for compatibility prior to installation.
- Do not add any material or thin before using ReadySeal.
- Do not install when the air and substrate temperatures are lower than 0°C
- Special precautions may be necessary when temperature exceed 35°C, contact Radmat for further information.

Application

- After the surface is prepared, and primed (if required), ReadySeal can be applied by brush, roller or airless spray. Do not thin ReadySeal.
- Whenever possible install the upstands first, bringing the ReadySeal and Reinforcement Fleece a minimum of 75mm onto the horizontal surface. If laying over thermal insulation ensure all board joints are taped.
- Open the tin and stir gentle to mix the contents thoroughly, do not whisk.
- When embedding the Reinforcement Fleece on the upstands, ensure the substrate has been assessed with a *Radmat Site Quality Technician* with regard the need for further preparation and/or use of a primer, following which the first coat of the system is applied at a rate of 1 litre/m² and embed the Reinforcement Fleece into the first coat of ReadySeal while it is still wet using a soft brush to ensure a smooth application. Each run of reinforcement must overlap the previous run by at least 75mm.
- A second coat of ReadySeal is applied at a rate 0.9 litres/m², ensuring the Reinforcement Fleece is fully coated and a flat and level surface is achieved.
- The systems finished thickness is approximately 2.3mm.
- Allow to cure for a minimum of 5 hours before trafficking the area.
- If cured for more than 9 hours use ReadySeal Pre-Wipes and ReadySeal Surface Primer before creating an overlap or repair.
- Full cure will take 7 days.

Cautions

- Adhesion testing is recommended prior to application.
- Surface imperfections such as concrete nibs should be removed prior to application.
- Shiny/non-absorbent surface should be roughened with appropriate tools prior to application.
- Opened tins should be completely finished. Where ReadySeal is left in a tin, and the surface has cured to form a film, the film should be removed completely before using the liquid ReadySeal below.
- After curing, ReadySeal is non-hazardous.

Safety notice

- When installing use protective gloves.
- Install in a well-ventilated place.
- If ReadySeal comes in contact with the skin or eyes bathe immediately with plenty of water and soap.
- For more information please contact our technical department.

Delivery conditions

Delivery

20kg tin, 14.25L, 27 per pallet.

Storage and shelf life

Store in dry conditions in original packaging at temperatures between +5°C and +30°C. Protect from direct sunlight and frost. In the original closed package ReadySeal will be in good condition for at least 1 year.



Radmat Building Products Ltd Holland House, Valley Way, Rockingham Road, Market Harborough,
Leicestershire, LE16 7PS T : 01858 410 372 E : techenquiries@radmat.com

ReadySeal

Waterproofing Membrane

PRODUCT SPECIFICATION

Essential characteristics	Performance/Unit
Appearance	Fluid
Colour	RAL 7046 Telegrey 2
Thickness	approx 2.3mm
Density (ISO 1183-B)	1.50 gr/cm ³
Viscosity (25 °C)	85.00-95.00
Elasticity (BS2782 Part 3)	300%
Hardness (ShoreA) (DIN 53505-A-87)	300%
Heat exchange flexibility	-40°C - +80°C
Water vapour permeability (for 1.5mm thickness) Sd:	1m
Crack bridging	2mm
Film forming time (25°C, 50% R.H.)	30 mins
Cure (25°C, 50%R.H.)	5 hours
Completion of Cure (25 °C, 50% R.H.)	7 days
Water absorption (cured material (28 days) under water)	< 2%

This information given in good faith and is based on the latest knowledge available to Radmat Building products Ltd. Whilst every effort has been made to ensure that the contents of the publication are current while going to press, customers are advised that products, techniques and codes of practice are under constant review and liable to change without notice.

For further information on Radmat products and services please call **01858 410372**, email tech enquiries@radmat.com or visit our website www.radmat.com

MAY 21



Radmat Building Products Ltd Holland House, Valley Way, Rockingham Road, Market Harborough,
Leicestershire, LE16 7PS T : 01858 410 372 E : tech enquiries@radmat.com