



**ICB**  
*Waterproofing+*

# STRATAPRO SA

Self Adhesive Bituminous  
Waterproofing System

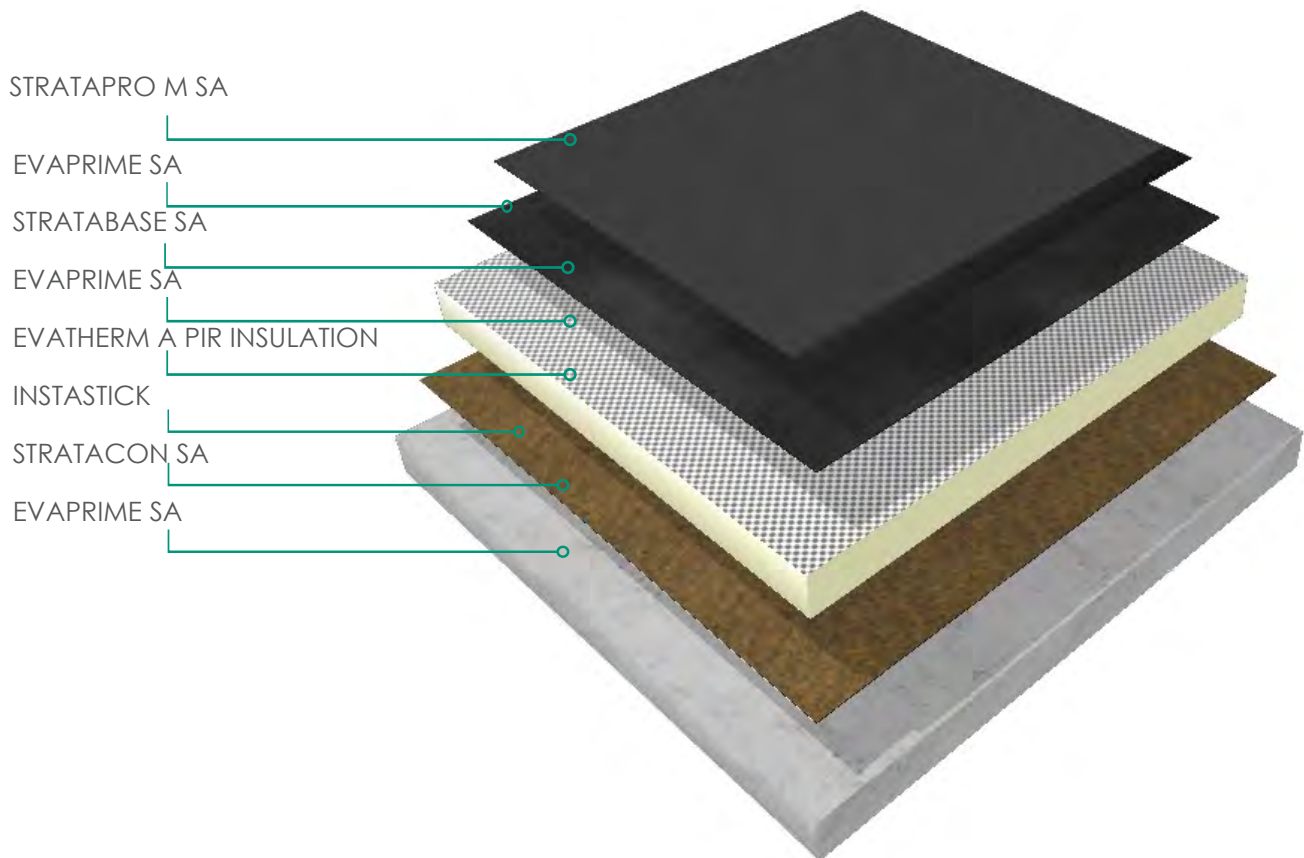


[www.icb.uk.com](http://www.icb.uk.com)

# TIMELESS TRADITION MEETS INNOVATION

The STRATAPRO SA range has been developed to provide a traditional two layer felt system without the associated risks from torching. Derived from our high performance STRATAPRO M system, the STRATAPRO SA system offers the same membrane technology, combining SBS and APP bitumen to provide a strong and flexible waterproofing system.

The STRATAPRO SA System fully complies with the NFRC's (National Federation of Roofing Contractors) Safe2Torch guidance AND enables an RBM (Reinforced Bitumen Membrane) System to be used on site where ALL torch applied works are prohibited.



## STRATAPRO SA system is ideal for use as:

- New Build or Refurbishment work
- A fully or partially torch-bonded waterproofing for flat or pitched roofs
- Sites where NO TORCH works are permitted
- Compliance with Safe2Torch Guidance
- Domestic or commercial sites





ICB (Waterproofing)Ltd commissioned independent testing of the STRATAPRO SA system for reaction to fire and resistance to wind loading.

The system, using a build-up of STRATAPRO M SA, STRATABASE SA and PIR insulation has been tested to both BS476:3 and DD ENV 1187 and holds EXT.F.AB and BROOF(t4) respectively.

The system was also subjected to dynamic wind uplift testing and can withstand wind uplift forces of up to 5 kPa\*.



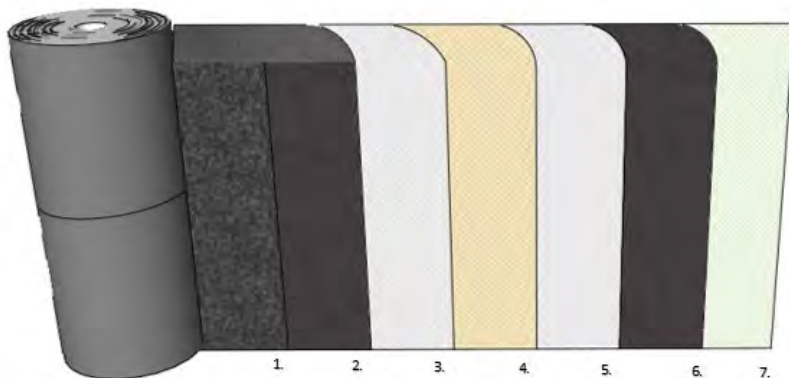
*\*Subject to safety factor. Please consult ICB for more info*



## FLAME FREE, SELF-ADHESIVE REINFORCED BITUMEN MEMBRANE HIGH PERFORMANCE CAP SHEET

STRATAPRO M SA is a multi-layer composite bitumen waterproofing membrane. The underside of the membrane is made of SBS modified bitumen, while the upper layer is made of APP modified bitumen. The SBS on the lower face offers a high level of flexibility and boasts elongation of up to 2000%. It will remain flexible in temperatures as low as -25°C and has a high resistance to thermooxidative aging. The upper layer consists of an elastoplastic mix of distilled bitumen, atactic and isotactic polypropylene and UV resistant polyolefin elastomers, supplemented with thermal shock stabilisers. The membrane has a self-adhesive backing, consisting of a specially selected mix of Venezuelan bitumen, tackifying resins and radial and linear elastomeric thermoplastic polymers.

The STRATAPRO M SA system provides a traditional felt system that can be used in areas where hot works are not permitted. It has been independently tested for Wind and Fire resistance with data proving the system can withstand wind forces of up to 5kPa\* and holds both EXT.FAB and Broof(t4) fire resistance ratings.



1. Mineral Finish 2. APP bitumen 3. Polyester reinforcement 4. Fiberglass reinforcement  
5. Polyester reinforcement 6. SBS bitumen 7. Self-adhesive backing

Forms part of a FULLY flame free RBM System

Safer, quicker and flame free

Enables compliance with Safe2Torch guidelines

Independently tested for Wind and Fire Resistance

### STANDARD

### T

### STRATAPRO M SA

Reinforcement			Composite Three-layer Non-woven Spunbond and fibreglass
Thickness	EN 1849-1	±0,2	3mm
Weight Mineral	EN 1849-1	±15%	4.5 kg / m <sup>2</sup>
Roll Size	EN 1848-1	≥	1x8m

*\*Subject to safety factor. Please consult ICB for more info*





# STRATABASE SA

## ELASTOMERIC DISTILLED POLYMER-BITUMEN SELF-ADHESIVE BASE LAYER

STRATABASE SA consists of thick elastomeric (SBS) distilled polymer-bitumen membrane, reinforced with a non woven composite polyester fabric and stabilised with fibre glass, offering high mechanical resistance and dimensional stability. The membrane has a self-adhesive backing, consisting of a specially selected mix of Venezuelan bitumen, tackifying resins and radial and linear elastomeric thermoplastic polymers. The top face of STRATABASE SA is protected by a Flamina film, which makes it possible to join sheets using the self-adhesive backing without any waste, no matter how the roll is cut.

The STRATABASE SA range provides a traditional felt system that can be used in areas where hot works are not permitted. The STRATABASE SA self-adhesive backing allows the membrane to be directly applied to insulation boards and timber surfaces.



1. Flamina finish 2. Bitumen 3. Polyester fiberglass reinforcement 4. Bitumen 5. Self-adhesive backing

Saving on the cost of adhesive and the associated costs of transport and application

Reduction in the risk of fire and burns

Enables compliance with Safe2Torch guidelines

Independently tested for Wind and Fire Resistance

	STANDARD	T	STRATABASE SA
Reinforcement			Non-woven composite polyester stabilised with fibreglass
Thickness	EN 1849-1	±0,2	3mm
Mass Per Unit Area	EN 1849-1	±10%	-
Roll Size	EN 1849-1	≥	1x15m

# STRATACON SA

## AIR & VAPOUR CONTROL LAYER (AVCL)

STRATACON SA is a self-adhesive membrane consisting of a special compound based on distilled bitumen, modified with selected polymers and tackifiers and reinforced with a fiberglass core. STRATACON SA self-adhesive modified bitumen blend assures good flexibility at low temperatures and provides excellent adhesion to various substrates.

STRATACON SA is suitable for use as an AVCL in low to medium humidity environments such as shops, offices and private dwellings.

Standard	TECHNICAL DATA		STRATACON SA	
	Features	Units	Nominal Values	Tolerances
EN 1848-1	LENGTH	m	15	> as/declared
EN 1848-1	WIDTH	m	1	-0,5%
EN 1849-1	THICKNESS	mm	2	± 0,2



Quick and easy  
installation

Compatible with most  
waterproofing systems

Flame Free

Helps remove the risk  
of condensation

# EVAPRIME SA

A high-performance, solvent based primer for bonding a variety of self-adhesive membranes and vapour control layers to a variety of substrates.

EvaPrime SA ensures that self-adhesive membranes can be used all year round and increases the bond strength between the membrane and substrate dramatically. It provides an outstanding bond and has been formulated to allow simple application providing a bond that exhibits high adhesive and cohesive strength with good flexibility.



Quick drying time with  
instant grab

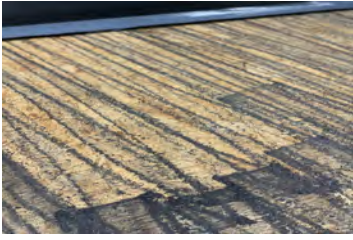
Excellent resistance  
to aging

Roller /spray  
application

Suitable for application in high  
and low temperatures



# INSTALLATION PROCESS



Prime the substrate with Evaprime SA



Apply StrataCon SA



Lay insulation and adhere it with Instastick, prime with EvaPrime SA & apply StrataBase SA



Prime face of StrataBase SA



Install StrataPro M SA



Using a heat gun, weld the laps to seal the membrane



Ensure 5-10mm uniform bead is formed



---

# TECHNICAL SERVICES

---

Roof Surveys / Condition Reports Specifications

Rainwater Calculations

Wind Uplift Calculations

'U' Value & Condensation Risk Analysis

Roof Safety Advice

Roof Mounted PV Calculations & System Design

Green & Blue Roof Design

[www.icb.uk.com](http://www.icb.uk.com)

**ICB (Waterproofing) Ltd.**

Unit 9 -11, Fleets Industrial Estate,  
Willis Way, Poole, Dorset, BH15 3SU UK

Tel: 01202 785200 Fax: 01202 785201

Email: [info@icb.uk.com](mailto:info@icb.uk.com)

 @icb\_uk

