



It's what  
**stunning**  
is made of.

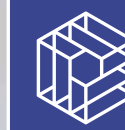
**GLAZED BRICKS**  
FOR THE MODERN DAY  
IMPRESSIONIST.







**Ibstock  
Brick**



**Ibstock  
Kevington**

It's what a  
**modern vision**  
is made of.

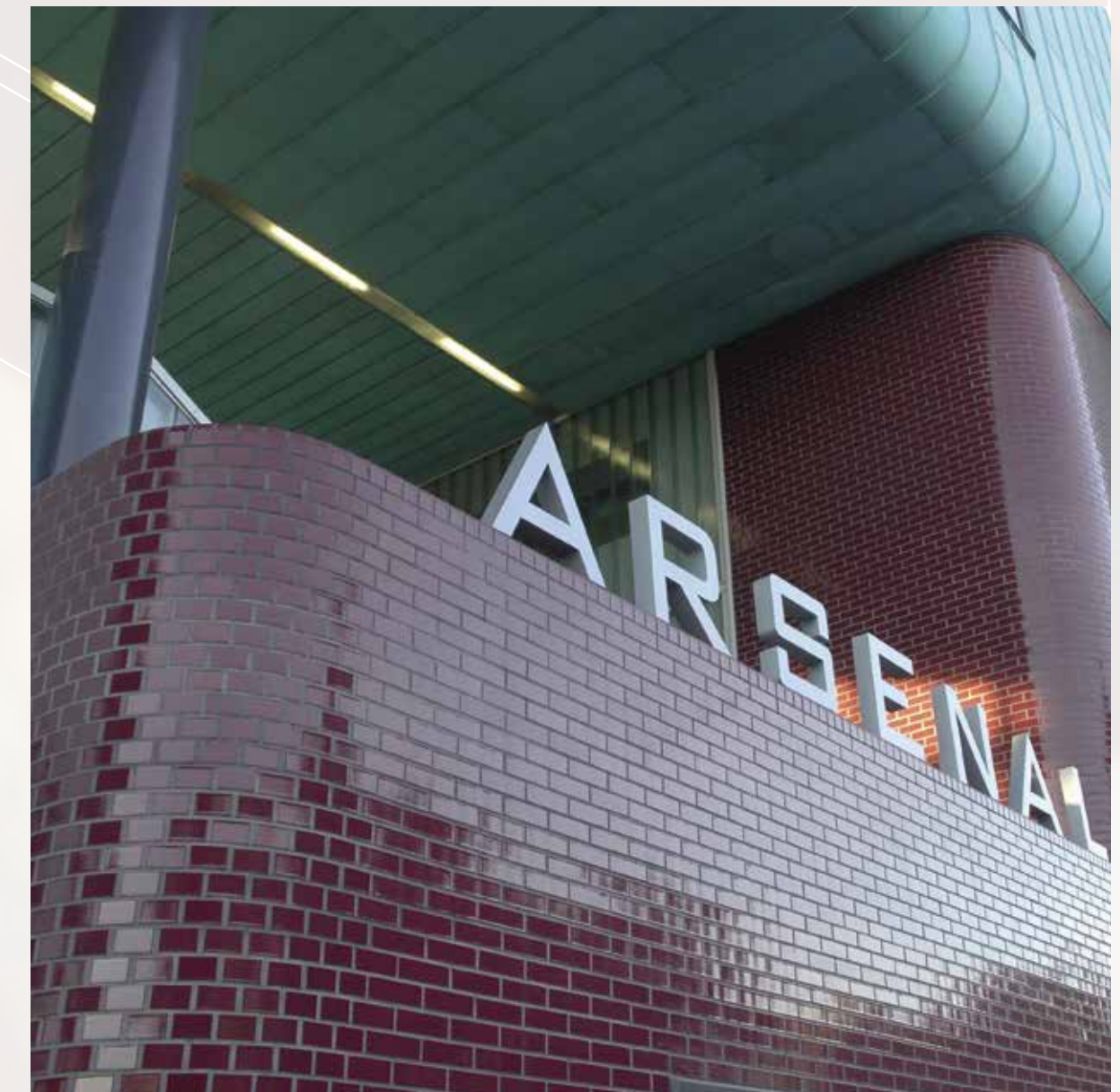
Over the past decade, we have seen a real shift towards the use of

## **striking colours in architectural projects.**

Now more than ever, architects and designers are looking for more creative and impactful ways to employ colour in their projects. Glazed bricks represent an exciting way of achieving this, using a timeless product to deliver a stylish, eye-catching finish to properties.



**Anglia Ruskin University, Cambridge.**  
Brick used: Blue, Red, Orange, Yellow and Grey Glazed



**Arsenal Football Club, Emirates Stadium, London.**  
Brick used: Burgundy Glazed



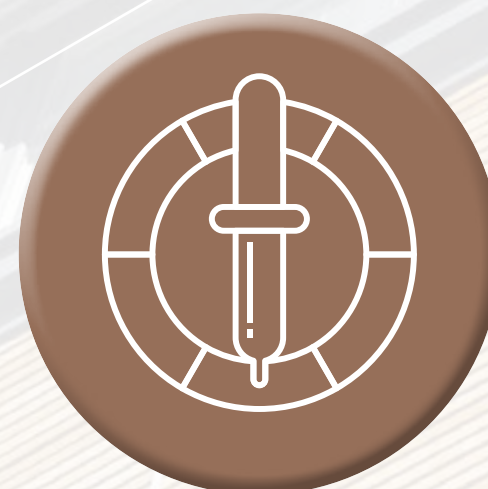
# It's what **creativity** is made of.



At Ibstock, we have made significant investment in our Glazed offering to ensure architects have all the tools they need to bring colour and kerb-appeal to their designs. Among the key benefits our range delivers includes:



**Humberside Divisional Police Headquarters, Hull.**  
Brick used: Burgundy, bespoke Orange, bespoke Blue and three bespoke shades of Grey Glazed in 440x215mm.



**EXTENSIVE RANGE OF  
STANDARD COLOURS**



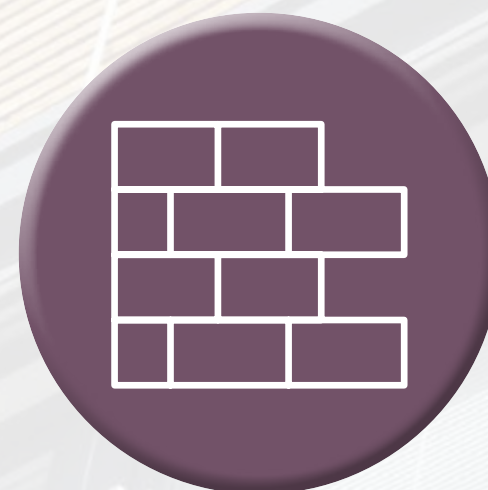
**ABLE TO MATCH  
ANY RAL COLOUR**



**BESPOKE COLOURS AND  
SHADES AVAILABLE**



**HIGH QUALITY  
FINISH**



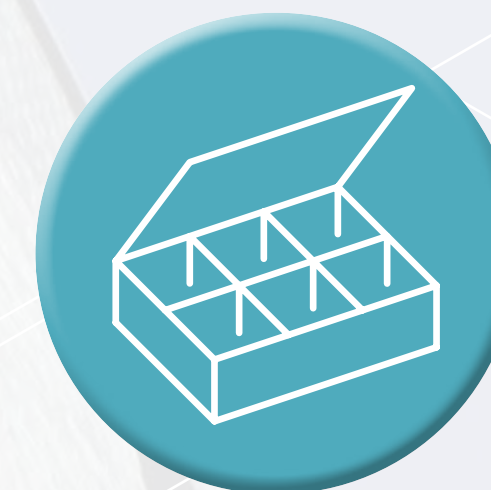
**AVAILABLE IN WIRECUT, SOFT  
MUD, WATERSTRUCK AND  
HANDMADE BRICK TYPES**



**AVAILABLE IN SPECIAL  
SHAPES, BESPOKE  
BRICKS AND LINEAR**



**GLAZED OPTIONS AVAILABLE  
FOR A WIDE RANGE OF  
IBSTOCK SOLUTIONS**



**SAMPLES AVAILABLE  
UPON REQUEST**



It's what  
**choice**  
is made of.

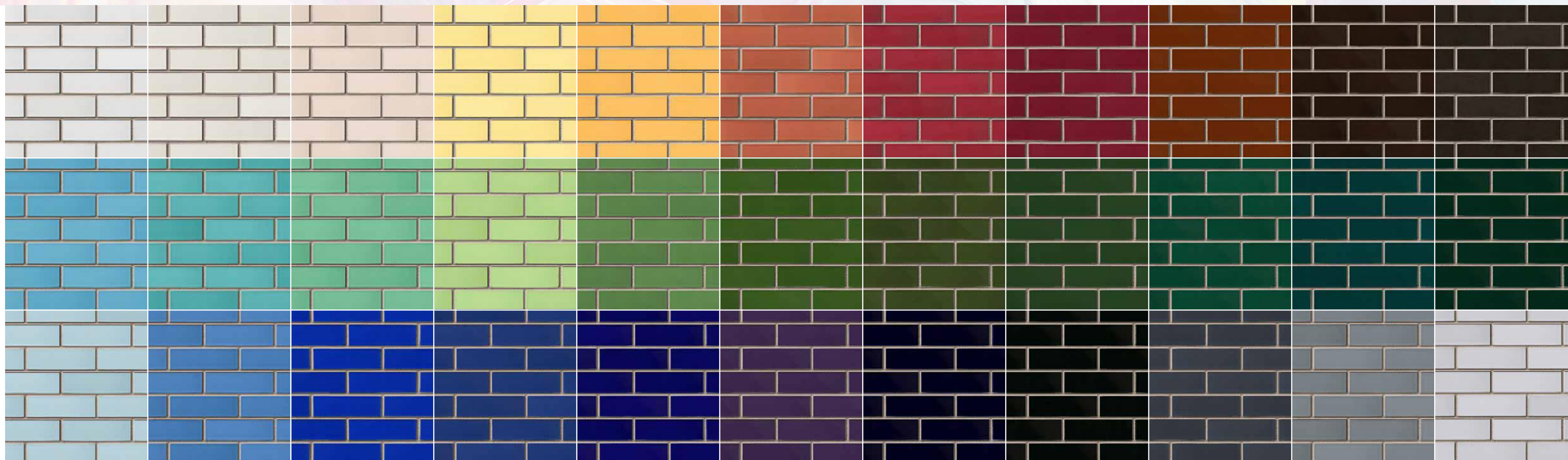


**Ibstock  
Brick**



**Ibstock  
Kevington**

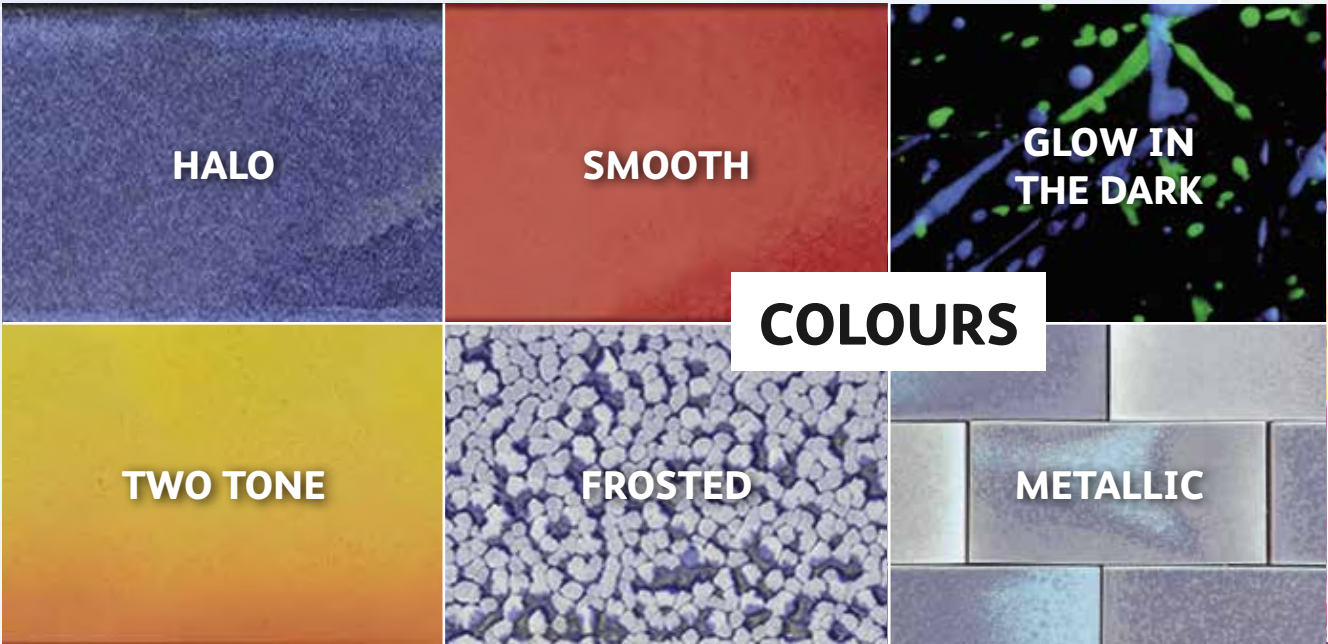
**STANDARD GLAZED COLOUR RANGE**







It's what  
**unrivalled variety**  
is made of.







**Ibstock  
Brick**



**Ibstock  
Kevington**

It's what  
**unrivalled variety**  
is made of.



**BACK TO SWATCHES**

## **TEXTURES**

We have the capability to glaze any of our standard brick textures.

From traditional finishes, such as Soft Mud and Handmade, to our contemporary Smooth and Waterstruck, we can manufacture any brick to your chosen texture, in any colour – meeting the exact design requirements of your project.



**The Triangle Building, Cambridge Assessment, Cambridge.**

Brick used: A bespoke blend of White and Blue Glazed bricks including special and bespoke shapes in Soft Mud texture.



It's what  
**unrivalled variety**  
is made of.

[⏪ BACK TO SWATCHES](#)

## SPECIALS

One key capability that sets us apart from most of our competitors is our ability to glaze our entire range of British-standard Special Shapes.

If your glazed project requires both special shaped and standard shaped bricks, our 'everything under one roof' approach ensures quality and colour remains consistent throughout your project.

Our full range of brick slips can also be glazed in any colour, texture and finish. Brick slips are ideal for use with our MechSlip and Nexus systems, our extensive range of precast components, and are also a popular choice for general renovation projects, as a stylish and durable alternative to tile.



**West Hampstead Station, London.**

Brick used: Ibstock Umbra Sawtooth Glazed graduated shades of bespoke Green.



**Anglia Ruskin University, Cambridge.**

Brick used: Orange glazed brick slips.



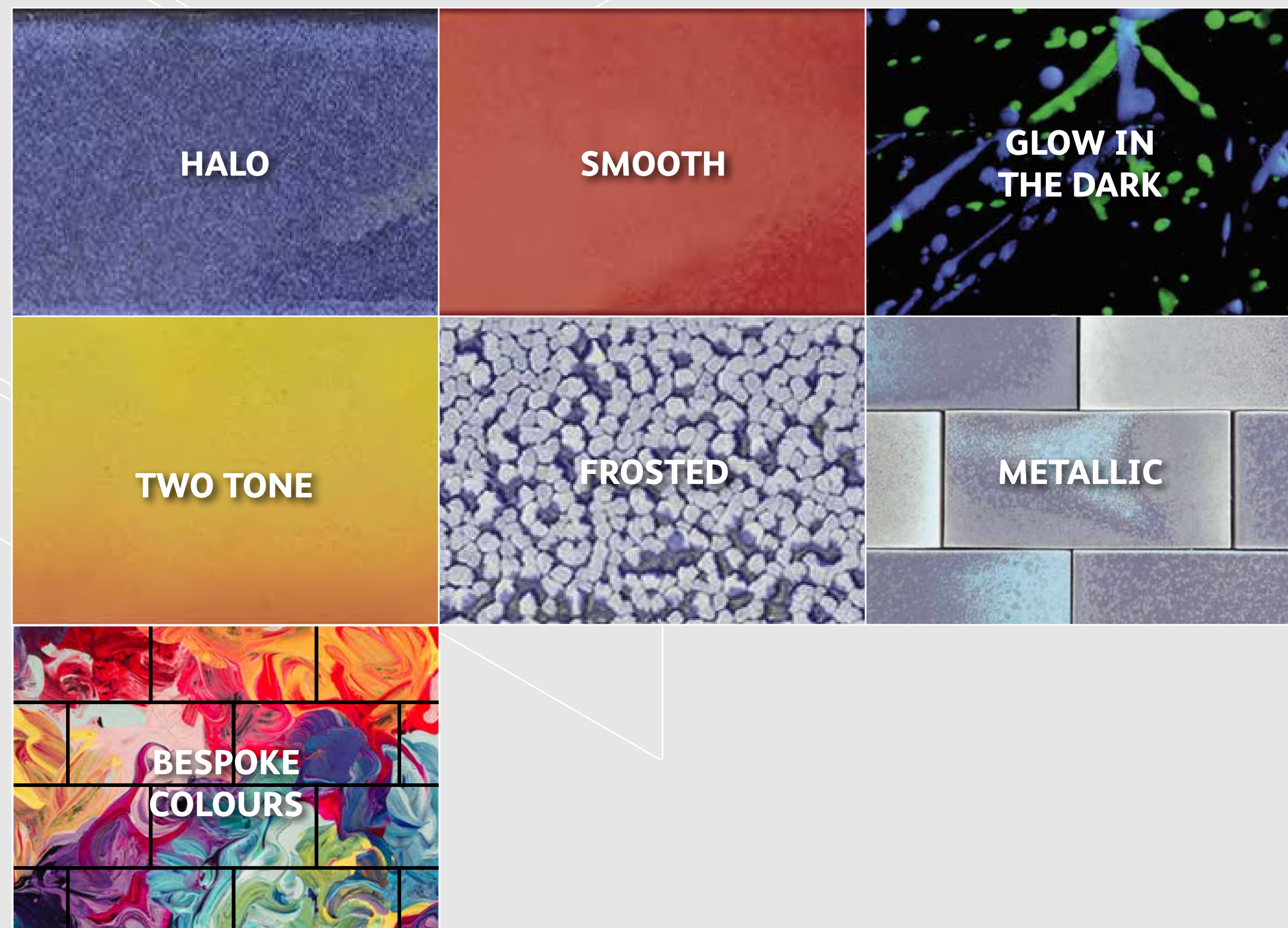
It's what  
**unrivalled variety**  
is made of.

[⏪ BACK TO SWATCHES](#)

## COLOURS

Looking for something extra special? Our glazed range is the broadest available in the UK, so as well as our high quality standard colours, we can also offer an array of even more striking aesthetic options including Halo, Two Tone, Frosted, even Glow in the Dark!

If you're looking for something even more unique, we can create bespoke options just for you. Whatever the colour, whatever the finish, we strive to provide a solution to suit your individual requirements.





It's what  
**unrivalled variety**  
is made of.



**BACK TO SWATCHES**

## SIZES

At Ibstock, we believe size matters and that's why our glazed offering is not restricted to certain brick size.

Oversized bricks, including our elegantly lengthened Linear bricks and our Fireborn block ranges, can be glazed in exactly the same array of textures, colours and finishes as their standard sized equivalents.



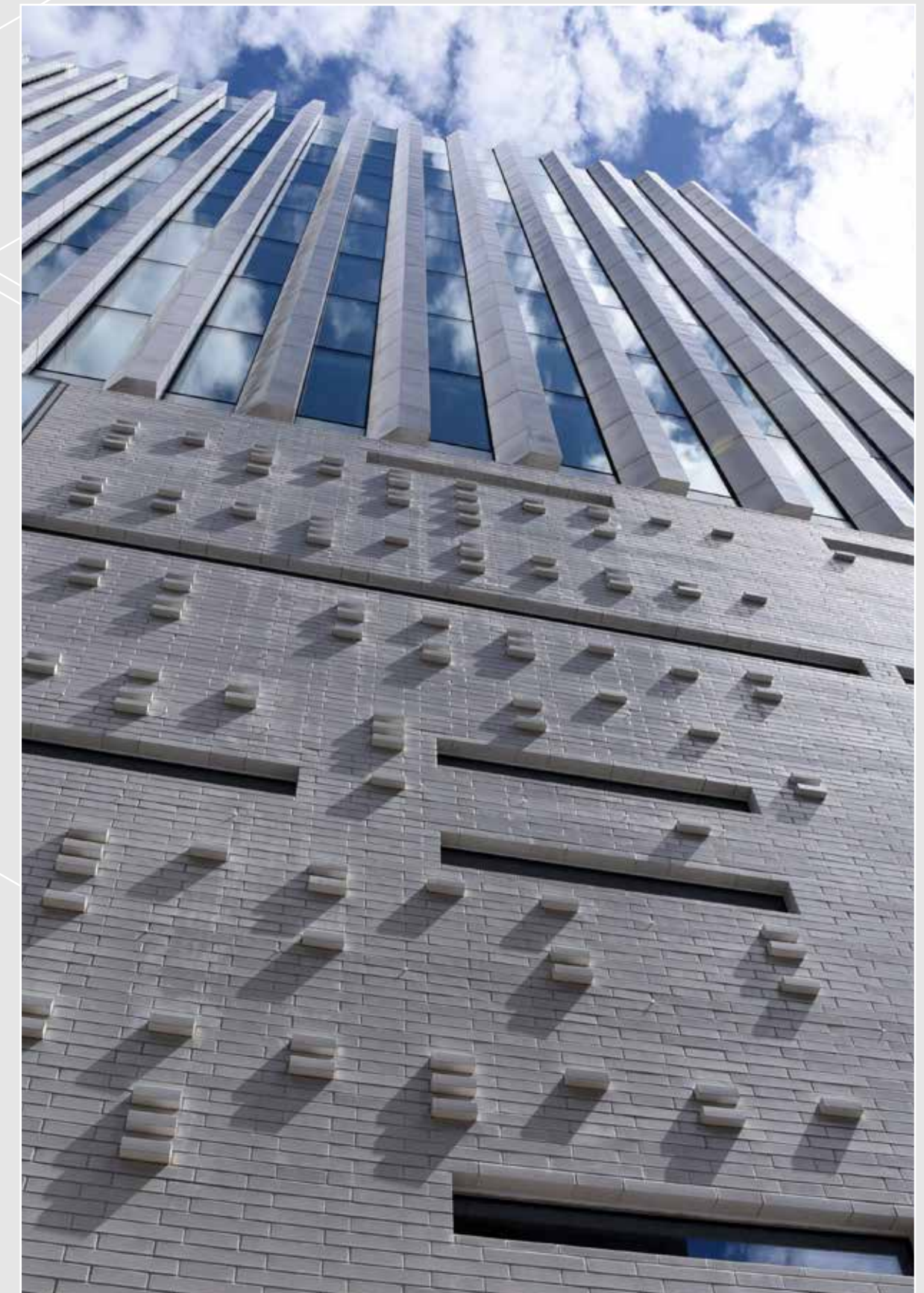
**Ibstock  
Brick**



**Ibstock  
Kevington**



**Flemingate Shopping Centre, Beverley, East Yorkshire.**  
Brick used: Fireborn in Red Glazed Smooth texture.



**The Music Box, London.**  
Brick used: Linear Brick plus special shapes in White Glazed.



# It's what opportunity is made of.



**Ibstock  
Brick**



**Ibstock  
Kevington**

## NEXUS

Our BBA approved range of Nexus brick-faced soffit and lintel systems make modern brick-faced soffits and lintels achievable and easy-to-install – all with a safety guarantee.

These aesthetically pleasing features pose complex engineering issues, as these areas of brick must be held in place but with the necessary supporting steelwork remaining unseen.

To meet this challenge, Ibstock Kevington and Ancon, two of the UK's foremost innovators in prefabricated brickwork manufacture and support, created the NEXUS range of advanced lightweight solutions and what's more, the compatible brick slips can be glazed in any texture, colour and finish.



**Blackfriars Circus, London.**

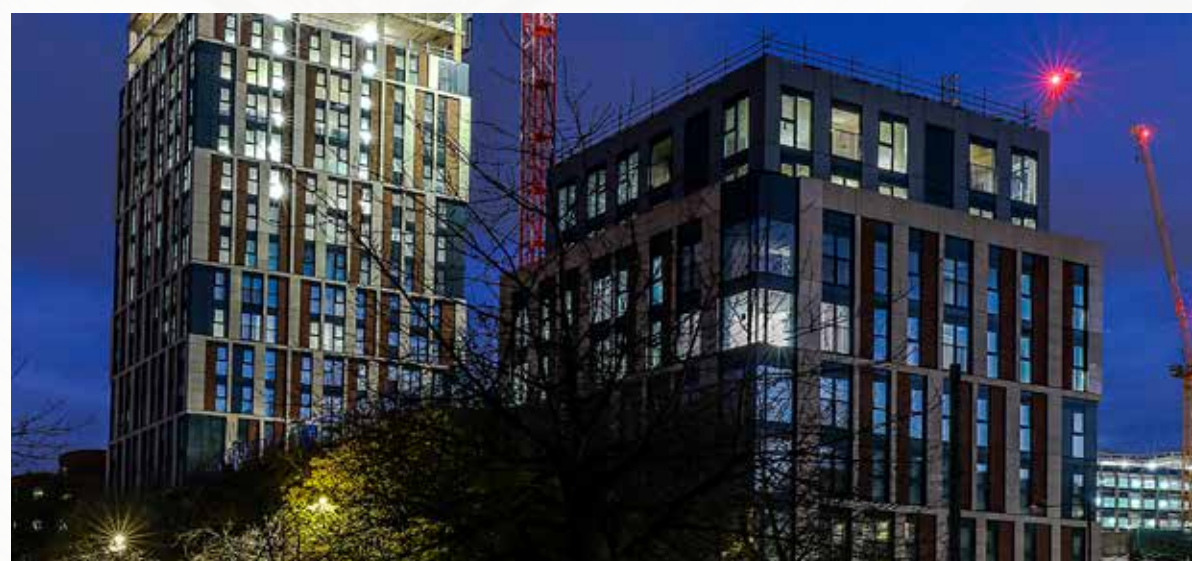
Brick used: Standard Sawtooth and special shapes in a blend of whites, green and browns.

## MECHSLIP

Our BBA approved MechSlip leads the field when it comes to safety and performance – and you don't have to compromise on design, either.

MechSlip brings you the freedom to design beautiful architecture. You can choose to incorporate popular design features from deep or shallow brick reveals to projecting brickwork patterns. From unlimited applications of vertical brick coursing to traditional or more unusual bond patterns.

Whichever you choose, it's been certified by the BBA for use in the MechSlip system and what's more, everything above can be glazed in any texture, colour and finish.



**Castle Park View, Bristol.**

Product used: MechSlip.

## PRECAST

Our vast range of brick-faced precast products, including Lintels, Arches and Panels can be glazed in any texture, colour and finish.

Manufactured to specification in one of our specialist facilities and delivered direct to site, our lightweight precast range of glazed products couldn't be easier to handle and install, meaning you don't have to compromise on the overall look and feel of your project. Your entire project can be striking, seamless glazed brick.



**Blackfriars Circus, London.**

Brick used: Standard Sawtooth and special shapes in a blend of whites, green and browns.



From concept  
to build.



We are proud of the expertise we are able to offer to support our clients with their projects ***from concept to build.***

This capability has enabled us to help with the design and delivery of a wide range of projects over many years.

**“We believe the proof of Ibstock’s value throughout the specification process is in the projects we help deliver.”**



# From **concept** to build. The Triangle Building.

**CONCEPT**

**TO**

**BUILD**

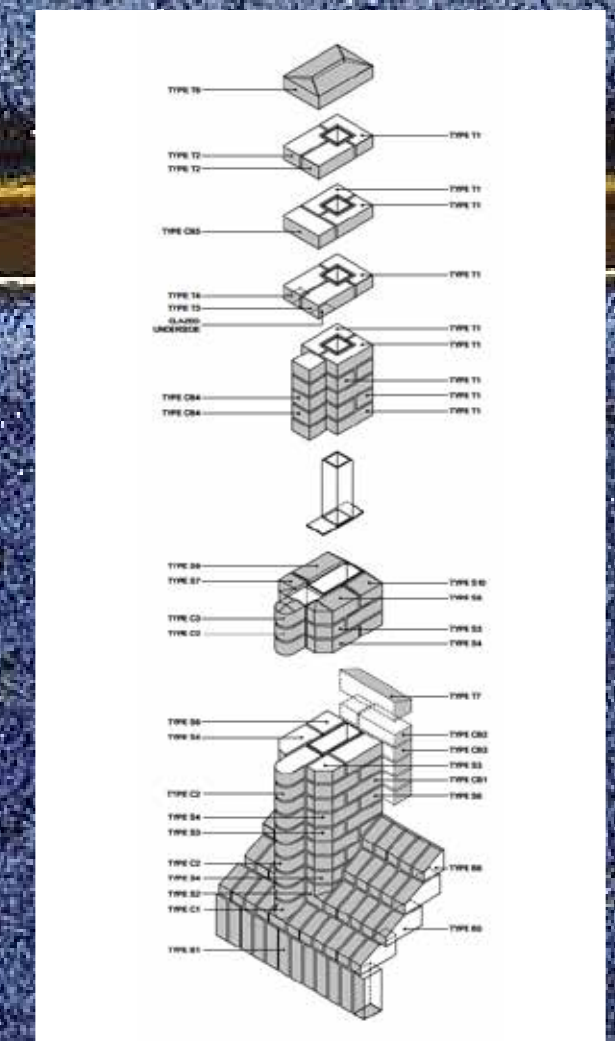
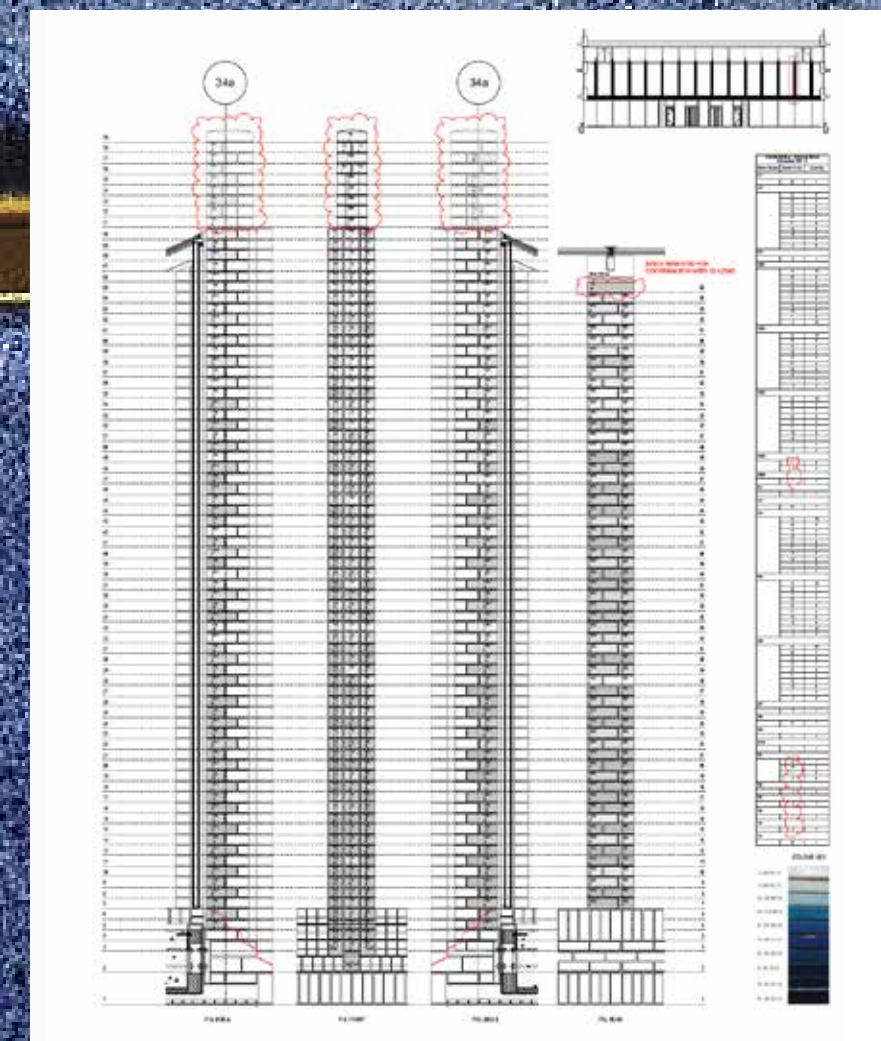

## YOUR CONCEPT

Standing at more than 39 metres, The Triangle is a brand new, landmark tower housing the new international headquarters of the Cambridge Assessment's staff.

Covering more than 360,000 sq ft, the development is set to be the biggest office complex in Cambridge.

A development on such a scale, in a city as renowned for its architectural heritage as Cambridge, puts the specification process under intense scrutiny. Looking to give The Triangle a dynamic, uniquely modern, edifice, the architect leading the project, Sidell Gibson, also had to be sympathetic to the neighbouring buildings and wider conservation area.

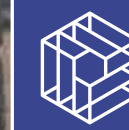
Working to such a complex brief, the architect reached out via N R Taylor to our expert design advisory team for guidance. Joshua Cox, Design Advisor at Ibstock, said: "The Triangle is an exciting new development for the city of Cambridge. The architect was keen for the development to be both in keeping with the city's wider brick vernacular, but also unique enough to deliver real kerb-appeal.







**Ibstock  
Brick**



**Ibstock  
Kevington**

# From concept to build. The Triangle Building.

CONCEPT



TO



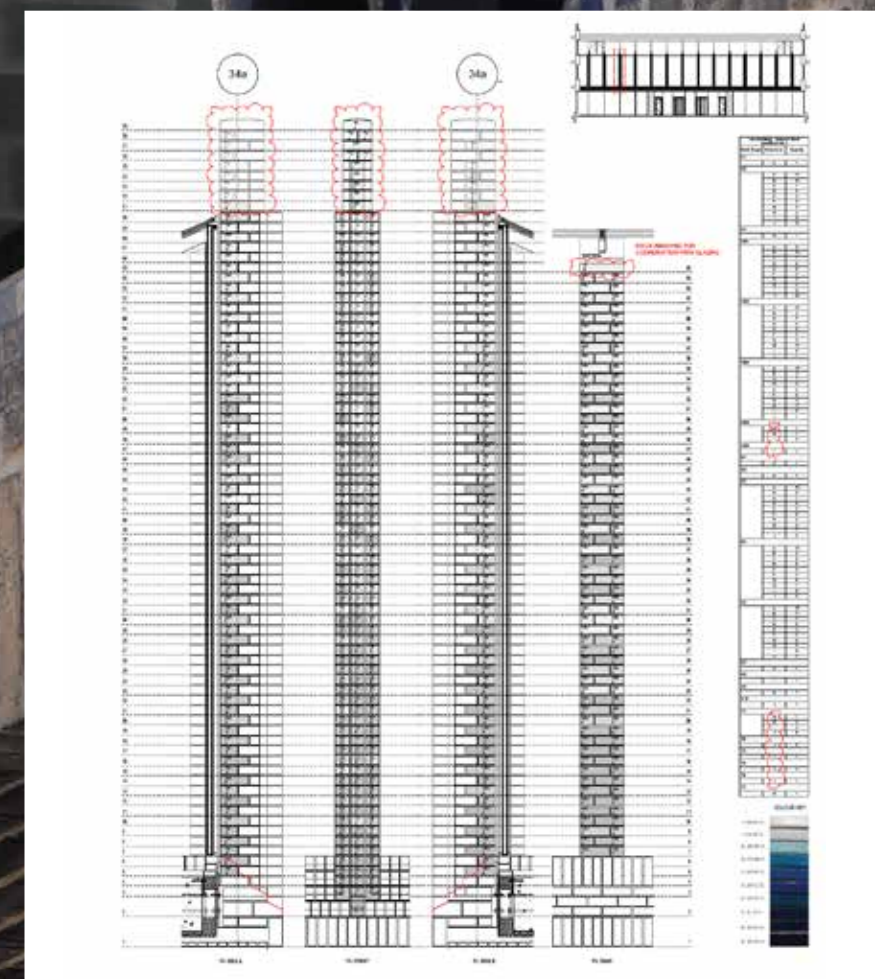
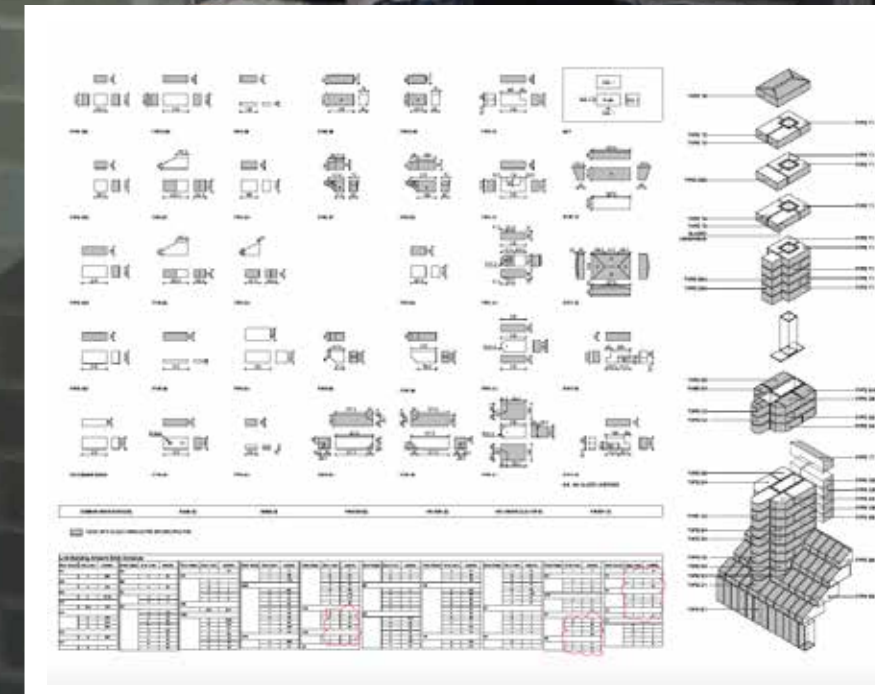
BUILD



## OUR SOLUTIONS

Presenting us with a unique set of colours and textures they wanted to incorporate in the development, the architect was keen for The Triangle to have a truly striking finish – something we were able to provide via our Glazed Brick offering, thanks to our unique colour blend process and range of available textures.

That commitment to aesthetics continued throughout the entire specification process. The architect chose our Soft Mud texture and used a number of our non-standard specials throughout the project, an array of different shapes and cuts which can be used to lend a development a real sense of uniqueness. Indeed, our ability to glaze our entire Special Shapes range, as well as bespoke shapes, is one of the key reasons Architects approach Ibstock.



## COLOUR KEY

J : 291 BY 12

I : 291 BZ 12

H : 291 BP 12

G : 212 GK 12

F : 291 BX 12

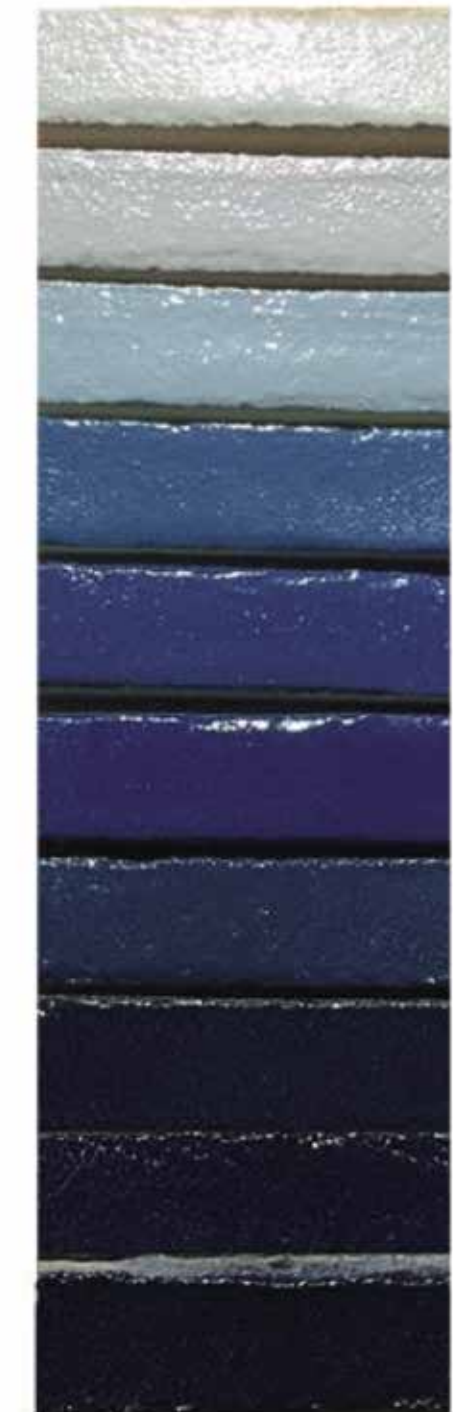
E : 291 CJ 12

D : 291 EX 12

C : BL 19 12

B : 291 EY 12

A : 291 EZ 12





# From concept to **build**.

## The Triangle Building.

CONCEPT



TO



BUILD



### **THE TRIANGLE BUILDING, CAMBRIDGE ASSESSMENT, CAMBRIDGE**

“Ultimately, our partnership-led approach has enabled the architect to specify products which meet the exact requirements laid out in their original brief; resulting in a development which is both uniquely modern, yet distinctly timeless.”





It's what  
**beautiful building**  
is made of.

BEAK STREET



THE MUSIC BOX



## BEAK STREET, SOHO, LONDON

40 Beak Street in Soho is clearly something special thanks to a cutting-edge design that ensures the street-corner development will provide an arresting architectural focal point for decades to come.

A glazed brick facade contributes significantly to the impact of 40 Beak Street, whose five storeys include a restaurant at ground level, several floors of offices, and a roof-terrace. Reportedly the first new build property of its kind in Soho in recent memory, the complex was designed by Stiff + Trevillion, with Veretec, and also drew on input from leading artist Lee Simmons, who devised the stunning decorative corner reveal/cornice.

It was always clear that brickwork was going to be a critical element of the project, with Stiff + Trevillion director Michael Stiff remarking that the design *“is steeped in the heritage of Soho” – of which brickwork is a crucial part. The choice of materials therefore needed to be complementary to those used in nearby buildings, although at the same time “everything from the glazed brick elevation to the door handles [was to be] unique to this building.”*

The search for perfection was such that the architects and clients Enstar Capital/Land Cap all visited the specialist brickworks at which the final choice of glazed bricks was produced. A bespoke colour of glazed brick was determined to suit the design – and also reference the glazed brickwork at the base of nearby buildings – with participants eventually identifying “a colour palette of varying shades of blue/green/turquoise colours within individual bricks as it progresses up the external façade of the building”.

Our NEXUS Original system was used so the modern Glazed brick-faced soffits and lintels were achievable and easy to install.



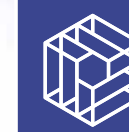
Ibstock  
Brick



Ibstock  
Kevington







**Ibstock  
Brick**



**Ibstock  
Kevington**

It's what  
**beautiful building**  
is made of.

BEAK STREET



THE MUSIC BOX



## THE MUSIC BOX, LONDON

The Music Box on Union Street, London, is a place for living and a space for learning.

Designed by SPPARC Architecture, it's a cubed shaped campus for the London College of Contemporary Music.

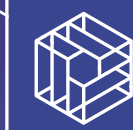
The purity of the form is reflected in the simplicity of the external surfaces which is where Ibstock Brick came in. White glazed brick was specified by the Architects to compliment the white ceramic cladding panels above, representing the clean, beautiful white ivory keys of a piano to astounding effect.

### **Ibstock Brick products used:**

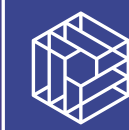
White Gloss WT10 Glazed Bricks -  
440 x 65 & 215 x 65mm format.







**Ibstock  
Brick**



**Ibstock  
Kevington**

For more information on our Glazed range  
and to discuss your project requirements,  
please call us on **0844 800 4576** or  
email **[specification@ibstock.co.uk](mailto:specification@ibstock.co.uk)**