

# LINEAR BRICKS

THE FINE LINE  
BETWEEN DESIGN  
AND GREAT DESIGN



**Ibstock  
Brick**



**ELEGANT, COLOURFUL AND STYLISH.**



**Ibstock**  
At the heart of building



**Project:** Foxcombe Lodge

**Brick:** Natural Cream Riven





# New design opportunities

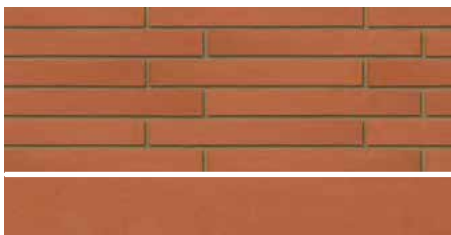
The Ibstock Linear range gives architects the flexibility to create ever more distinctive exteriors, whilst still retaining the beauty, longevity and traditional feel that only brick can give.

With a range of lengths up to 490mm and depths of either 65mm or 50mm, Ibstock Linear bricks allow you to accentuate the linearity of the façade to create a range of dramatic new effects that take architecture to a new level.

**Over 100 different sizes**, textures and colours means no compromises when it comes to choosing exactly the appearance you want – with Linear you get an extra touch of design and elegance.



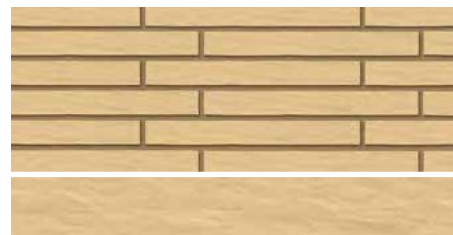
## ATLAS



Orange



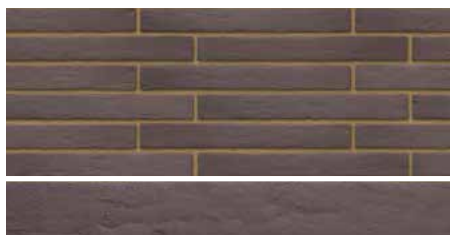
Natural Red Riven



Natural Cream Riven



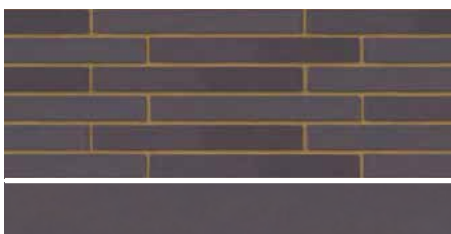
Natural Grey Riven



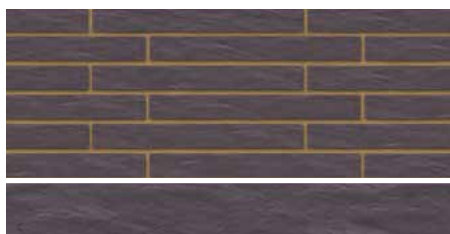
Dark Grey Tidal



Black



Natural Blue



Natural Blue Riven



Silver Black

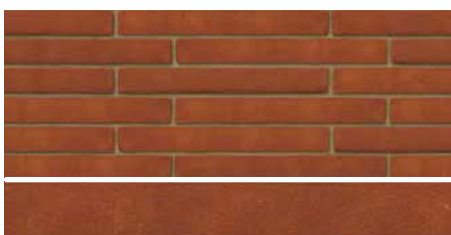


Black Riven

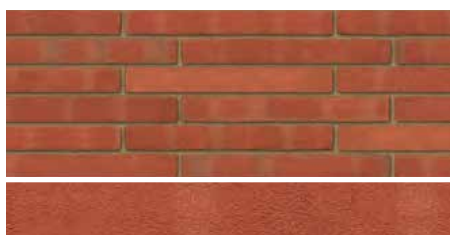


Steel Black

## LAYBROOK



Parham Red Stock



Parham Light Multi Stock

## BIRTLEY



Beamish Blend



Birtley Brown Waterstruck



Birtley Olde English



Birtley Olde English Buff

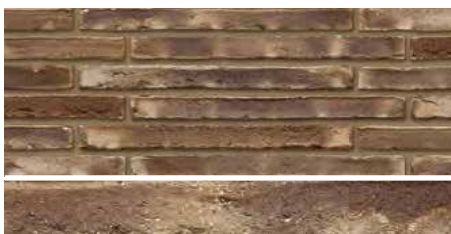


Millhouse Blend



Linear Birtley Olde English Grey

## CLERKENWELL



MG500-44 DARK GREY MULTI



MG500-D Light Grey Multi



MG500 Light Grey



BM500 White



MR500 Red Multi



MK500 Black Multi

# Case studies

A selection of recent projects where Linear Bricks have been used to help create inspiring results.



## PROJECT NAME

Anderston Flats, Argyle Street, Glasgow.

## BRICK

Ibstock. Birtley Old English. Glazed sawtooth bricks.

## ARCHITECT/DESIGNER

Collective Architecture

Anderston flats represent the completion of a masterplan for the area. Five new buildings, varying in height from four to seven storeys, front the streets around the site. The area is car-free. Design of the flats is tender-blind, and uses three materials: sandstone, concrete and brick. The decision to use brick was related to its uses on warehouses at the back of the site.



## PROJECT NAME

National Horizons Centre, Vicarage Road, Darlington DL1 1JM.

## BRICK

Ibstock Brick, Ibstock Linear Smooth and Riven Blue

## ARCHITECT/DESIGNER

Fairhurst Architects

The National Horizons Centre at Teeside University in Darlington is a world class facility with a real presence in its setting. This stunning building does not have the appearance of a regular science laboratory.

The design includes bold vertical façades constructed of dark Riven Blue bricks and extensive glazing which contrast handsomely with the striking Goosewing Grey roof. The bricks were chosen to match the colour of the neighbouring Centre for Professional and Executive Development (CPED), but the National Horizon Centre still finds ways to express its character and individuality.



## PROJECT NAME

Woodside Health Centre, Barr Street, Glasgow G20 7LR.

## BRICK

Ibstock, Birtley Beamish blend, Nexus Lintels pre-assembled brickwork

## ARCHITECT/DESIGNER

Page/Park Architects

When designing Woodside Medical Centre on a difficult site, architect Page/Park needed not only to satisfy the needs of the client, but also to recreate a piece of the city. The brick is in keeping with other developments in the area, featuring hand-cut bricks because they contrast with the building opposite which uses a very hard, sharp brick.

Because of the softness of the brick, it gives a softness to the whole facade which almost disguises the size of the building.

[For more information, click here.](#)

[For more information, click here.](#)

[For more information, click here.](#)





#### PROJECT NAME

Elmington Green, Southampton Way,  
Camberwell SE5 7SW.

#### BRICK

Ibstock Brick, Ibstock Birtley Olde English Buff,  
Ibstock Ivanhoe Cream Original, Capital Brown

#### ARCHITECT / DESIGNER

Shepherd Epstein Hunter

A stylish and contemporary development in fashionable Camberwell, this eye-catching project also reflects the area's Victorian heritage in a congruous and creative manner. Stunning brickwork is central to the development's aesthetic impact. The bricks were chosen for their visual appearance as well as their quality and durability.

Indeed, it is the bricks that create the contrasting textured patterns that distinguish different parts of the development. The development's signature characteristic is the number of elevations constructed from bricks with their top corner cut out. Solid Birtley Olde English Buff bricks from Ibstock were selected for the task because they lack either a frog or perforations.

[For more information, click here.](#)



#### PROJECT NAME

Hyde and Seek Creche, Harts Corner,  
Glasnevin Dublin 9.

#### BRICK

Ibstock Brick, Birtley Old English Buff

#### ARCHITECT/DESIGNER

URBAN-AGENCY

Hyde and Seek crèche in Dublin has been designed to provide the highest standard of childcare facilities for children from three months to 12 years old.

The development of the crèche was designed to create a bespoke piece of architecture that was custom-made for its users, featuring a peaceful urban oasis where children can learn, play, grow and develop. Encircled by a distressed brick wall garden that spans the perimeter of the site, the two-storey building features Ibstock's Birtley Old English Buff. The bricks were specified to match throughout the development, playing on architectural expression and scale, individualising the perception and viewpoint of each age group.

[For more information, click here.](#)



#### PROJECT NAME

Streatham Space Project, London SW4 4PA.

#### BRICK

Ibstock, Ibstock Linear Riven in Black, Orange  
and Cream Smooth

#### ARCHITECT/DESIGNER

MDR Architects

Streatham Space Project is a brand new place for theatre, comedy, music, art exhibitions and much more that features Linear brickwork to form a striking, inspiring and exciting focal point at the very heart of London Square's mixed-use Streatham Hill development.

Linear bricks with a smooth textured finish were specified to give the designers the flexibility to create the most distinctive exterior, allowing them to accentuate the linearity of the exterior to create a dramatic effect that takes architecture to a new level.

[For more information, click here.](#)

# Back to basics; designing with Linear bricks

## Creating a new design standard

Linear bricks open up a completely new aesthetic for buildings, whilst still maintaining the durability and low maintenance attributes associated with one of our most enduring building materials.

**The different brick dimensions can be easily accommodated with just a little extra thought, yet give you additional flexibility to create a unique canvas for your building.**

## Designing with non-standard formats

Ibstock has made it easy to design with Linear bricks by formulating modular tables, similar to those for 'traditional' metric bricks. Using our tables of relevant brick sizes, it is a simple matter to locate openings and returns with the given dimensions, whilst maintaining the visual integrity of whole and half bricks.

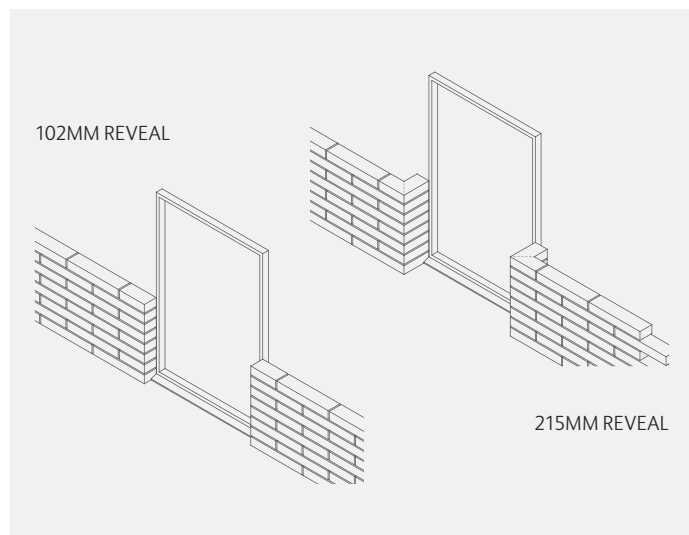
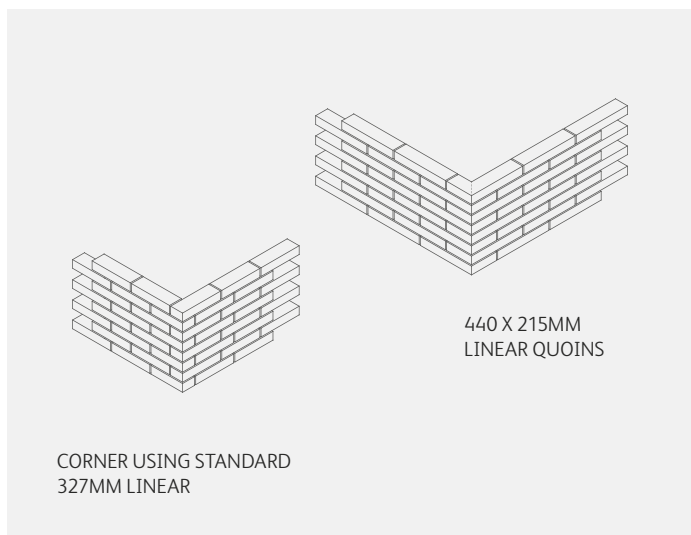
Technical Information Sheet TIS A3; Brickwork Dimension Tables: Larger Formats, contains both horizontal and vertical dimension tables and is available to download from: [www.ibstock.com/technical-support.asp](http://www.ibstock.com/technical-support.asp)

**Project:**  
The Lir National Academy  
of Dramatic Art

**Brick:**  
Staffordshire Slate Blue Smooth







## Corner detailing

Corners are an obvious consideration when using different format bricks. Using the most popular 440x65mm format in half lap/stretcher bond, a 440x215x65mm This is usually achieved in larger units by mitre-cutting and bonding two individual bricks together to form a 90° corner or corners greater or less than 90° as required.

A similar effect can be achieved by inserting a 327x65mm brick, although this does lose the continuity of the stretcher bond.

## Door and window reveals

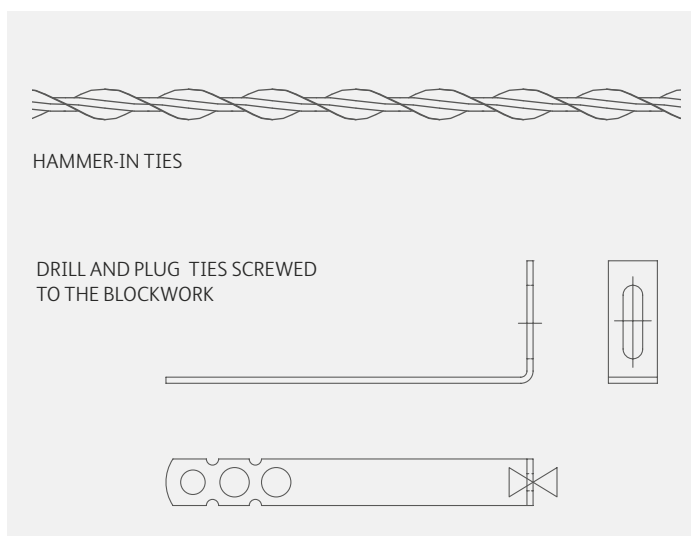
These can be formed using either standard 102mm deep bricks, or by using quoins of 215mm depth, or greater as required.

## Accommodating different course heights

**Linear bricks come in two different heights, 65mm – the standard brick height included in TIS A2 and 50mm.**

It is relatively easy to work out coursing-heights in each case – both coursing up to the standard 2110mm door opening height (35 courses for 50mm bricks and 28 courses for 65mm bricks), which is ideal when using standard steel lintels in the blockwork inner leaf.

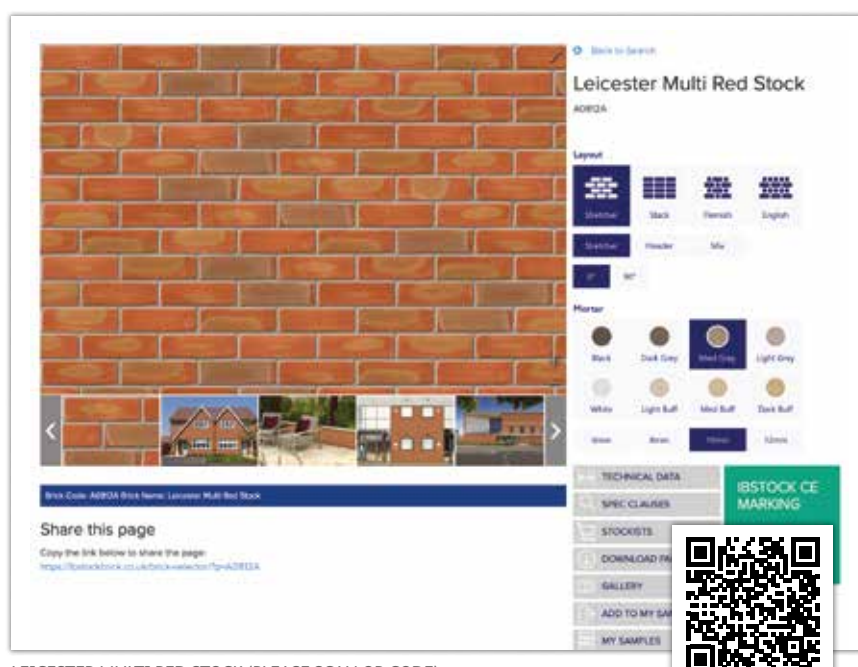
The major difference comes when coursing 50mm bricks against a blockwork inner leaf, as standard wall ties will not course through. The height difference is, however, easy to accommodate using more specialist wall ties which are available from Ancon. Please refer to [www.ancon.co.uk](http://www.ancon.co.uk) for more information.



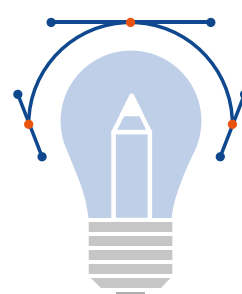
# Supporting your project process from Concept to Build

## Need help to visualise your project?

Helping you from the initial concept stage of a project, our unique product selector enables you to select any product from our range and see it in build. The layout and mortar colour can also be changed. Scan the QR code below to see the selector in action.



LEICESTER MULTI RED STOCK (PLEASE SCAN QR CODE)

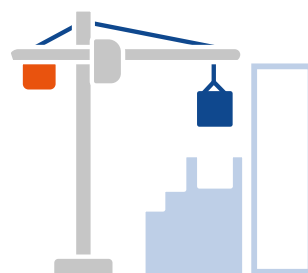
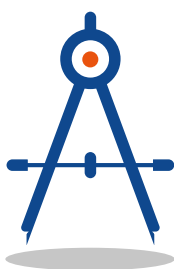
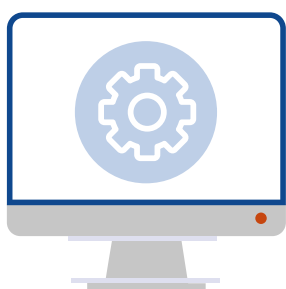


## Concept

At the early stage of your project we are on hand to offer support for your concept proposals – providing aesthetic and product specification guidance to help you crystallise your design vision.



Our qualified and experienced design and technical teams can help you deliver greater performance, aesthetics and cost control for your project. By supporting your design at the earliest possible stage, we have more opportunities to drive additional value into your project.



## Design

At the design stage, we can support various key technical elements of brickwork construction. This can range from brick performance to the wider structure including mortar and/or fixing system specification.

## Plan

At the product planning stage we can form customised product data and schedules to support the order placement and delivery sequence for your project.

## Build

We can support your build phase by offering a clear understanding on product build sequences.

Guidance on good site practice can also be obtained by speaking to our technical advisors.

## Need a top up with brick knowledge and education?

At Ibstock we have an industry leading team with a wide range of specialist technical and design skills. To keep us up to date, we also lead key technical committees, sit on industry bodies and support practising professionals and university students through Ibstock's comprehensive CPD and training programme.



#### HEAD OFFICE

Ibstock Plc, Leicester Road, Ibstock, Leicestershire, LE67 6HS

**T:** 0844 800 4575

**E:** [enquiries@ibstock.co.uk](mailto:enquiries@ibstock.co.uk)

[www.ibstockbrick.co.uk](http://www.ibstockbrick.co.uk)



**Ibstock  
Brick**

Ibstock Brick is an Ibstock Plc company.

