



component
developments

Stainless Steel **Industrial Crash Protection**

Component Developments

What we do

We design, manufacture and supply standard, adapted and bespoke stainless steel building products.

We offer total support

Our aim is to help you overcome those common onsite problems that relate to drainage and surface protection. At the same time we will offer you complete guidance and support, right from the design stage through to the completion and hand over of your project.

We know what works

We've worked on countless, wide-ranging projects, from small family run breweries through to the production facilities of the biggest known food and drink brands in the world. Simply put, with experience comes knowledge. We can help you achieve just what you need.

We want to make it easy for you

Our service ties together plumbing, floor finishes, loadings and hygiene and we put it together in one neat tidy, cost effective package.

We are fast - very fast!

Timing is of the essence and having your product made quickly and delivered to site at a time that is most convenient to you is important and we take that very seriously.

We are always at hand

Whatever you need, we are here to help. We are always at the end of the phone, where you will get straight through to a human being.

We don't do answering machines!



Kerbing

Kerbing is ideal for creating a hygienic barrier between the wall and the floor in a new build or retro fit situation. Our kerbs have been specifically designed to offer easy to clean protection at the base of walls from passing trolleys, pallet trucks or forklift traffic.

Double kerb

For sectioning an area into different rooms, the double sided kerbs are ideal. Once secured and back filled, wall panels can be installed to form the room. Corner pieces and stop ends available.

Single kerb

These are mainly used around the perimeter, sitting alongside the exterior wall. They are then in filled with concrete. This again allows the wall panels to be built on top.

Retro fit kerb

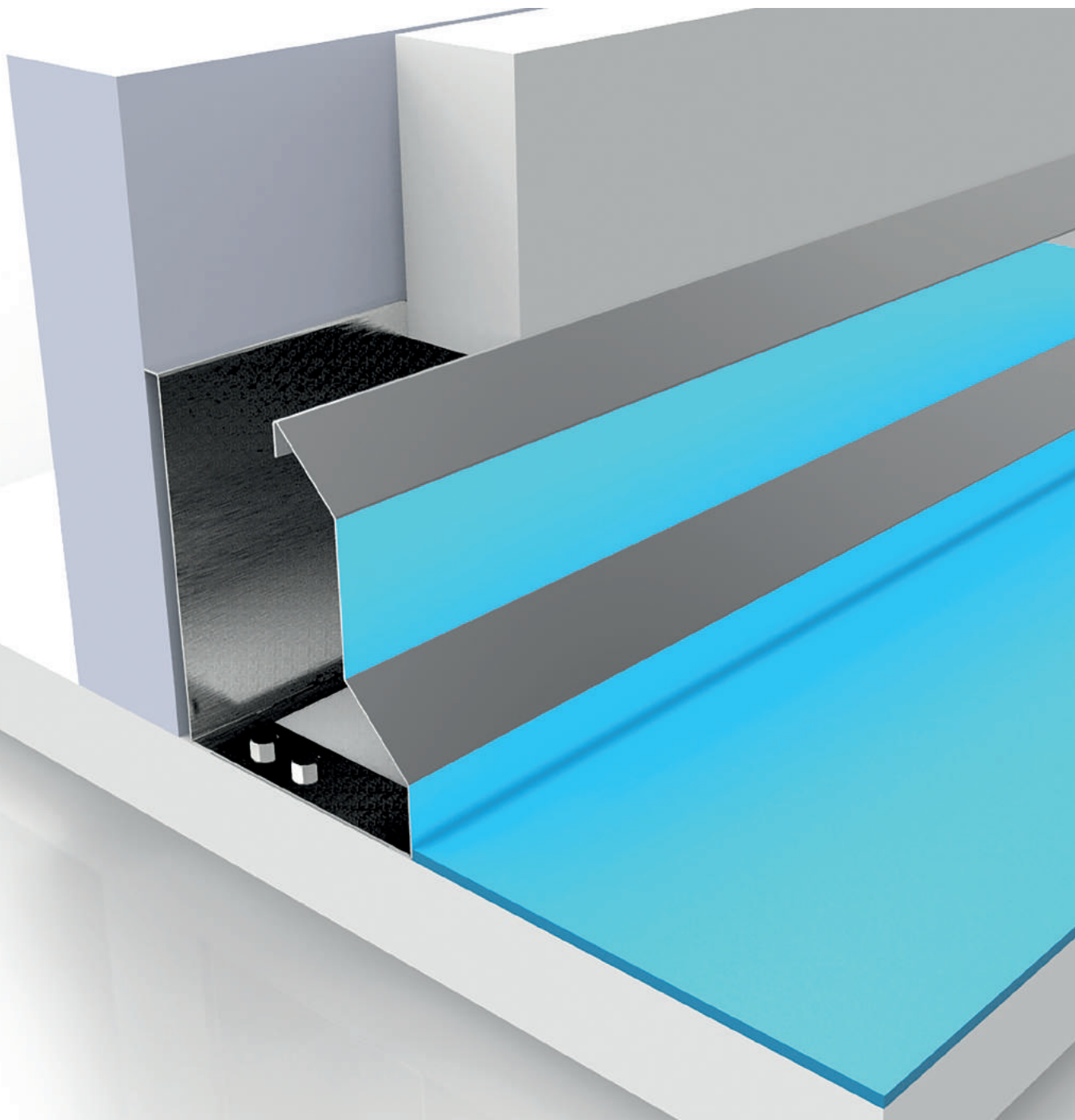
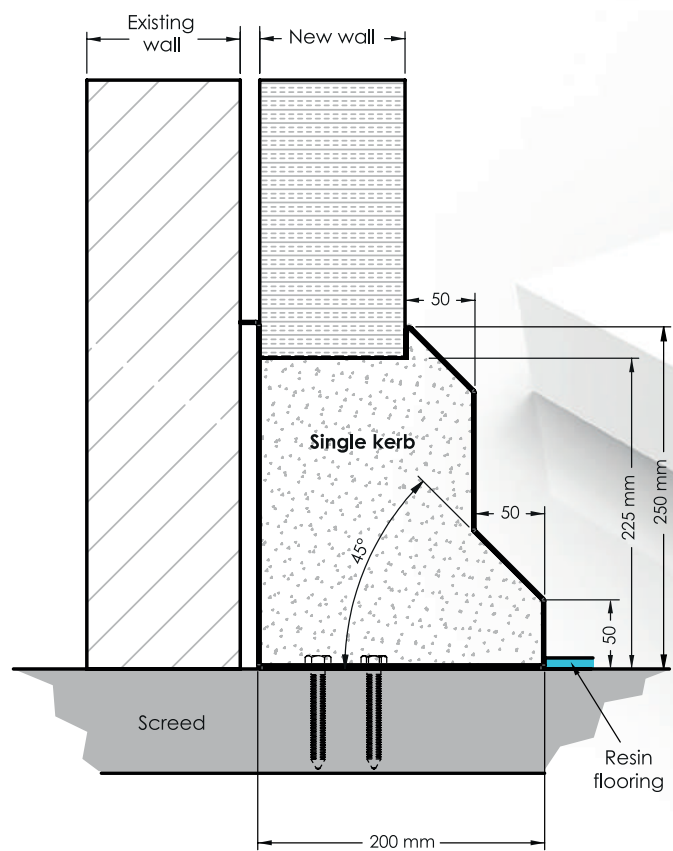
For pre-existing walls in refurb situations, retro fit kerbs offer the solution. They are also ideal for use in conjunction with single and double kerbs as a continuation of protection.

Standard kerbing overview

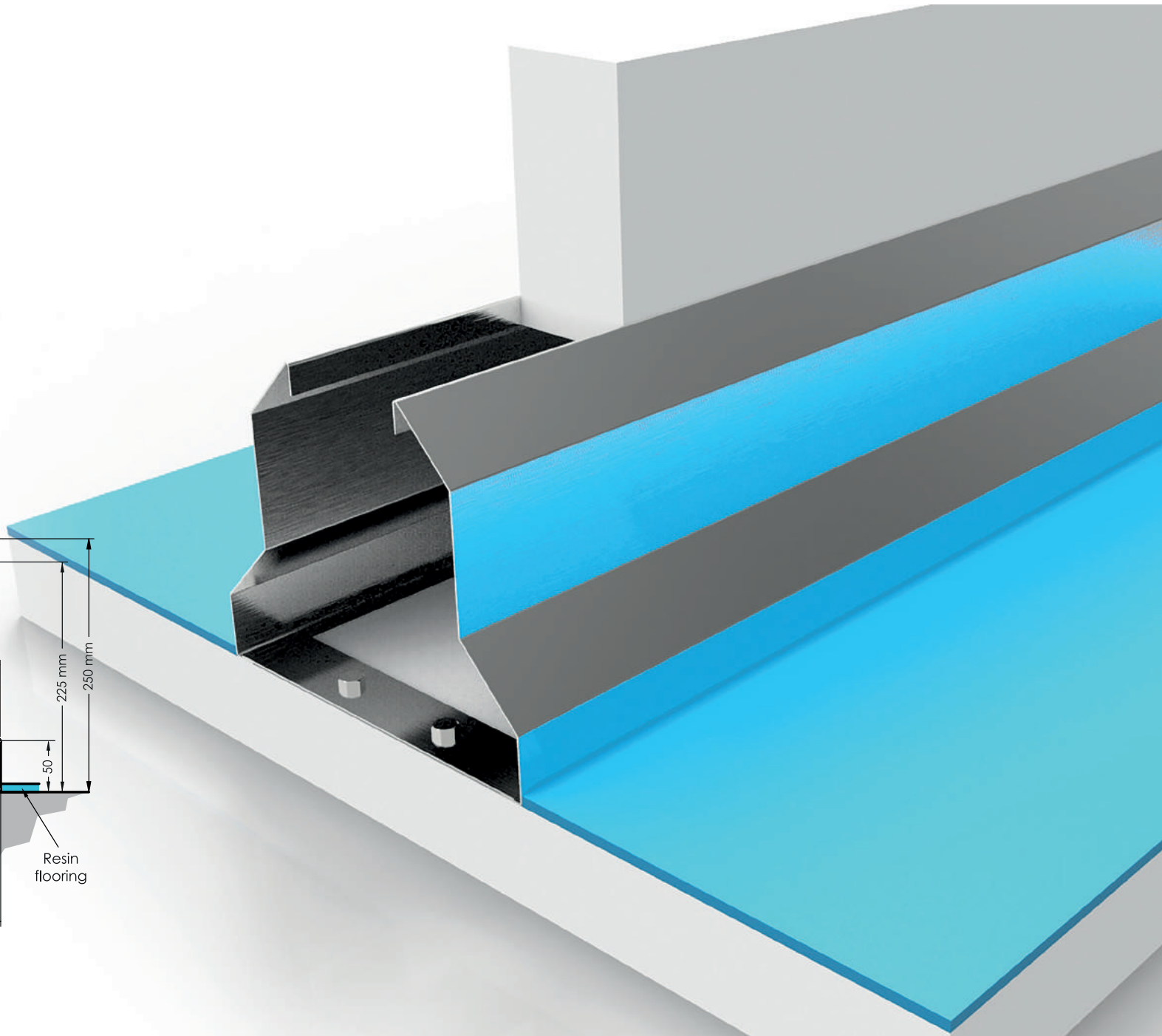
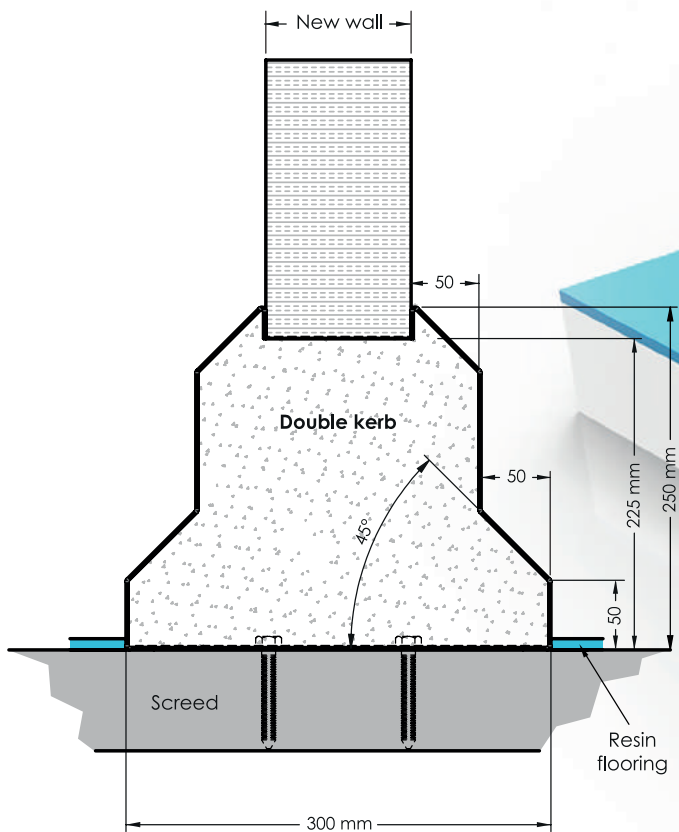
- Austenitic stainless steel
(BS EN 10088:2) *grades: 1.4301 (AISI 304)*
1.4404 (AISI 316)
- High strength - *concrete filled*
- Hygienic - *ideal for food prep areas*
- Protection from forklift and pallet trucks
- Interlocking
- Resistant to cleaning solvents
- 3 different styles available
- Use for new build or refurbishment
- Long lifespan
- Competitive pricing. Call us for a quote



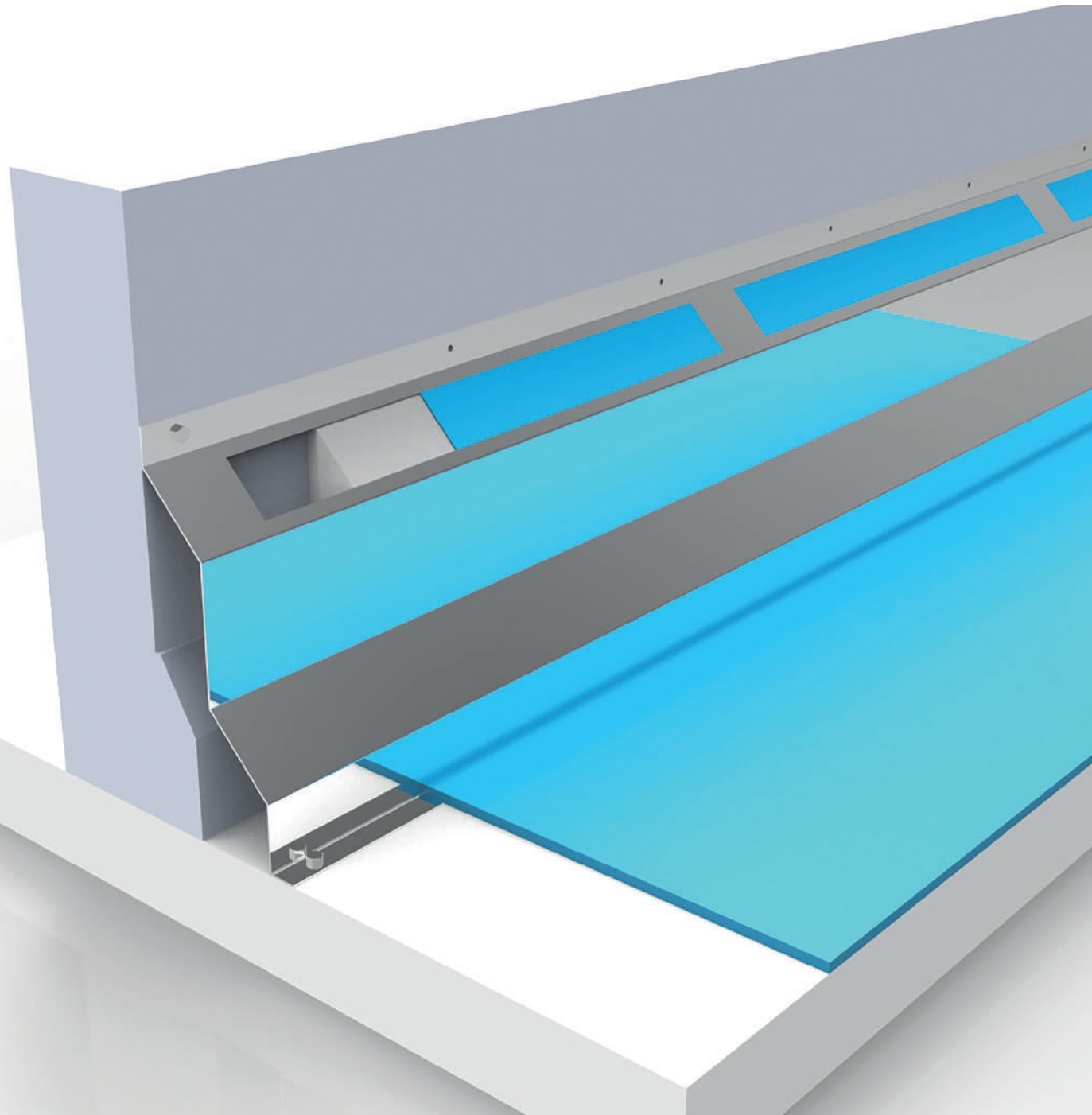
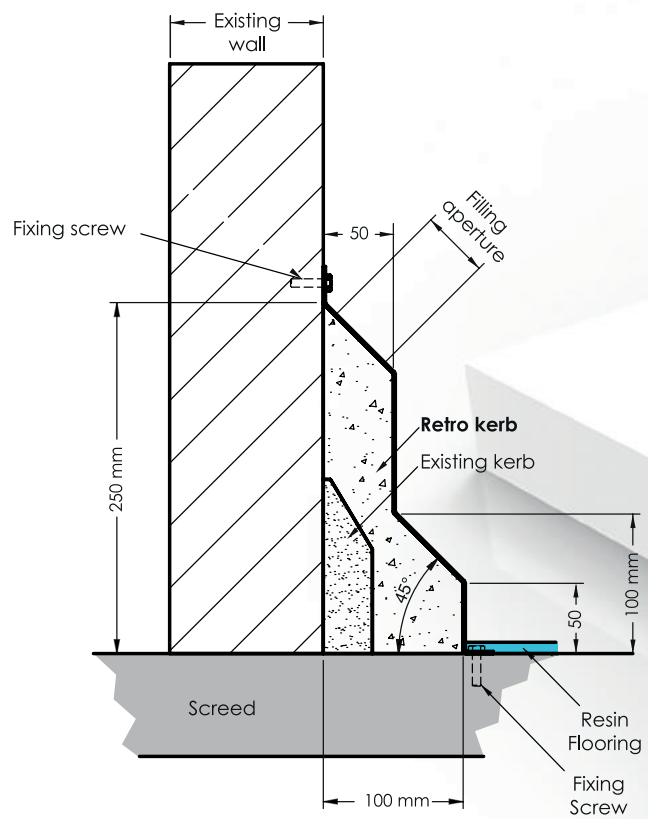
Single kerb (8100 series)



Double kerb (8200 series)



Retro kerb (8300) series



Crash protection

Kerbs are not the only wall protection that we produce at Component Developments. We also produce a range of industrial crash protection.

We have various options ideal for protecting walls, corners, sliding doors and machinery from being hit by forklifts and pallet trucks.

Low wall crash rails

Sitting low around the perimeter of the room, our crash rails are either bolted onto the surface of the floor or, for extra strength, they can be sunk into the ground.

Bollards

Individual posts made to any size required. Again bolted to the floor or sunk into the ground.

Goal post rails

Protect around entrances and exits with our goal post style bollards. As the name suggests, they look just like goal posts and offer protection around the entire of the opening.

If you would like more information on our range of crash protection please just drop us a line.

Crash protection overview

- Austenitic stainless steel
(BS EN 10088:2) *grades: 1.4301 (AISI 304)*
1.4404 (AISI 316)
- High impact strength
- Protection from forklift and pallet trucks
- Hygienic - *ideal for food prep areas*
- All round wall protection
- Different styles and options available
- Various fixing methods
- Resistant to cleaning solvents
- Please contact for a fast quote







component
developments



Telephone: 01952 588488

Website: www.componentdevelopments.com

Email: sales@componentdevelopments.com

Address: Halesfield 10, Telford TF7 4QP, UK