

GroundGuards®



TOUGHER GROUND PROTECTION



Ground-Guards

A global business with traditional values

Ground-Guards Ltd is located just off the A1 in Walton, near Leeds, in the United Kingdom.

Our large 3.5 acre site has 31,000 sq ft of onsite warehouse storage, so we can respond to customer orders quickly and deliver stock fast.

Our new business headquarters, with 10,000 sq ft of modern office space, includes full corporate training facilities, which are also available for our clients to use.

OUR MISSION

Ground-Guards is a division of the global GreenTek Group, established in 1969. Our values have remained the same since day one:

"We aim to provide innovative, high-performance, and cost effective temporary access solutions, that minimise the impact on the environment."

OUR VISION

"To be the global innovator that makes plastic trackway so effective, easy to use and affordable, that plywood and stone roadways become redundant for temporary access use."

OUR VALUES

Innovation

We know that "best practice" is not good enough. We will be the innovators of "next practice"

Generosity

We appreciate all our clients, staff and suppliers and will always be caring and responsible.

100/100

We aim to give 100% effectiveness, 100% of the time through our products, people and processes.

Integrity

We will always be honest, respectful and genuine.

Guaranteed

We offer the most straightforward guarantees in the market, giving you security and consistency.

Delivering WOW!

We will always differentiate ourselves, making positive differences to you by going above and beyond expectations.

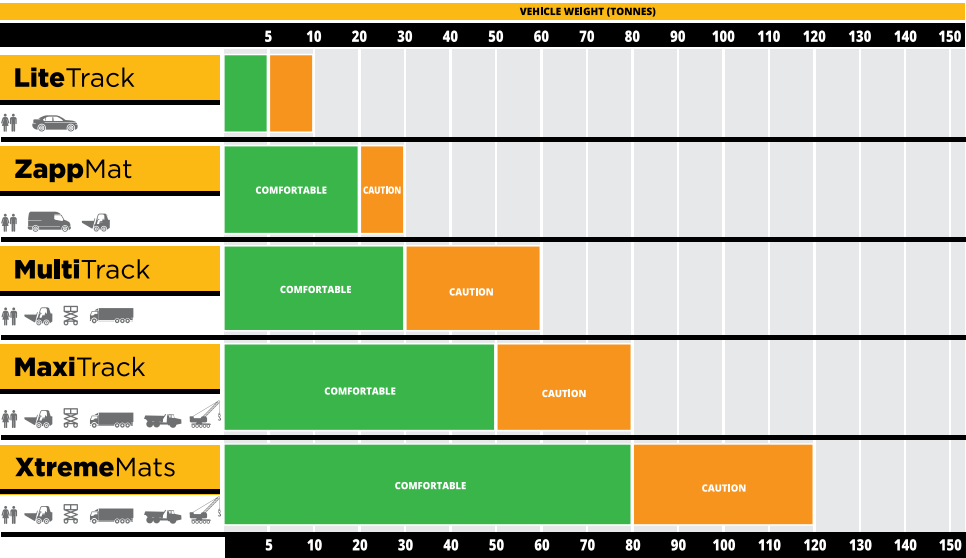


Since Ground-Guards introduced the first plastic ground protection mats to the UK in 2003, our range has grown considerably. Although these mats may appear quite similar, they all have different features which make them particularly suited to specific applications.

When choosing the right mats for your job, consideration must be given to the firmness of the ground, the weight of the vehicles, the duration of the job, and the frequency of vehicle movements per day. The more demanding the application, the higher specification mats will be required. Unpredictable weather is one of the biggest challenges, and becomes increasingly relevant if the job will last for weeks rather than days.



PRODUCT COMPARISON CHART



These loading guides are for firm, dry ground. If the weather is likely to turn wet, or the job duration is in excess of a week, please ask for advice about using a stronger product.

HOW TO CHOOSE THE RIGHT MAT FOR YOUR NEEDS

It is vital to select the correct mat system for your project.

Temporary roadways rely on the strength of the ground for support, but as this is different from one site to another and varies according to how wet or dry the weather is, it is always best to err on the side of caution.

Therefore, the comfortable loading range for any mat system is usually significantly less than its maximum rating.

You also need to consider that the longer the project duration, the greater the risk of rain softening the underlying ground, and therefore the more heavy-duty mat system you will need.

If you need to use steel tracked machinery on your mats please remember that this will inevitably cause scuffing of the treads and potential damage to the joiners, especially where machinery is turning, so rubber tracked or tyred machinery is preferable wherever possible.

This leaflet can only give a general guide, so please call our friendly Customer Support Team on +44 (0)113 267 6000 for more specific advice.

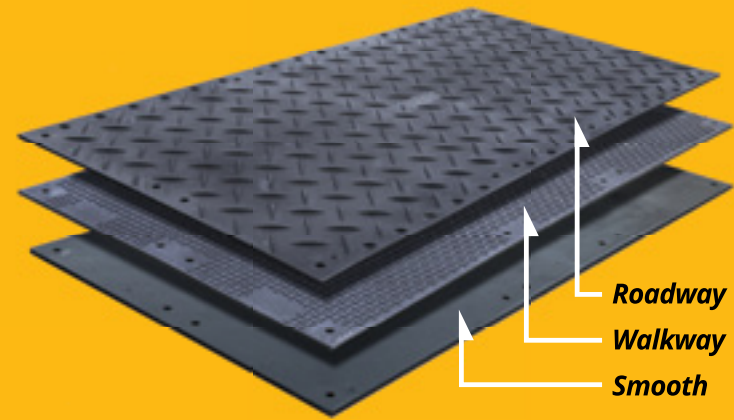




VEHICLE WEIGHT (TONNES) 5 10 20 30 40 50 60



- TOUGH**
Virtually indestructible HDPE polymer.
- EASY TO HANDLE**
Lightweight 39kg mats easily handleable with two workers.
- MULTI-TREAD**
Roadway, Walkway and Smooth tread options cater for various vehicular and pedestrian needs.
- ENVIRONMENTALLY FRIENDLY**
Made from 100% recycled plastic and fully recyclable.



MultiTrack is the mat that started the whole plastic trackway revolution back in 2002 and it is still the undisputed market leader in 8' x 4' mats today.

The secret of MultiTrack's popularity is the extreme durability of the special HDPE plastic. The result is a trackway mat system which gives unmatched durability for demanding applications such as plant hire companies and civil engineers.

- Material:** Special blend of HDPE recycled plastic, fully recyclable
- Overall Size:** 2435 x 1215 x 13mm (plus treads)
- Surface Area:** 2.95m²
- Weight:** 39kg
- Tread Options:** Roadway, Walkway and Smooth, or a combination
- Connectors:** 10 joining points. A choice of standard clip joiners, low profile joiners or bolted joiners, plus anchor pins
- Packed in:** Stillage of 25 mats
- Stillage Pack:** *Weight:* 1105kg
Dimensions: 2550 x 1260 x 900mm
- Fire Rating:** UL94 HB
- Slip Testing:** BS7976 part 2
- Deflection:** *Ground CBR 4% :* Deflection 11mm
Ground CBR 11% : Deflection 17.7mm
- Installation Rate:** Approximately 50 mats per hour with a team of 4 plus a forklift driver



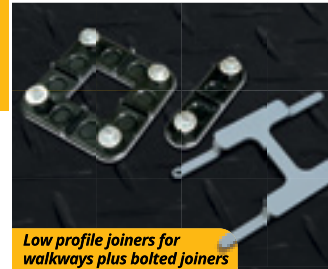
MultiTrack mats are the strongest in their category



Mats are easily moved using a HandiHook



Standard no-tools joiners quickly clip the mats together



Low profile joiners for walkways plus bolted joiners



Packed in stillages of 25 for safe, efficient storage

APPLICATIONS:

- ACCESS ROADS
- WALKWAYS
- PAVEMENT PROTECTION (WITH BASETRACK)
- EVENT FLOORING

MultiTrack



VEHICLE WEIGHT (TONNES)

5 10 20 30 40 50 60 70 80



EASY TO HANDLE

Lightweight 40kg mats easily handleable with 2 workers.

TOUGH

Unique Zetralene® plastic for maximum impact resistance.

EXTRA STRONG GRIP

Unique SmartGrip™ tread gives superior grip in all directions.

MUD SUPPRESSION

Flanged joints suppress mud seepage and enable heat expansion.



For demanding ground protection jobs, the MaxiTrack system offers unique benefits unavailable in any other product.

The mats have a core thickness of 23mm which is almost twice as thick as conventional systems, but due to their 1.8 x 0.9m size they still only weigh 40kg which makes them both rigid and easily man-handleable. The extra thickness enables an overlapping lip design with bolted connections, providing vastly superior support and mud suppression on soft ground. The connector holes are slotted to accommodate heat expansion, thus making MaxiTrack ideal for large areas such as car parks, military logistics depots and aircraft taxiways.

Material: Zetralene® recycled plastic, fully recyclable

Overall Size: 1900 x 1000 x 35mm

Nominal Size: 1800 x 900 x 23mm

Surface Area: 1.62m²

Weight: 40kg

Packed in: Stillage of 25 mats

Stillage Pack: **Weight:** 1130kg
Dimensions: 2110 x 1030 x 1090mm

Connectors: 6 self-aligning shoulder bolts per mat

Fire Rating: UL94 HB

Slip Testing: BS7976 part 2

Deflection: **Ground CBR 4% :** Deflection 9.5mm
Ground CBR 11% : Deflection 7.7mm

Installation Rate: Approximately 60 mats per hour with a team of 4 plus a forklift driver



Easy to install and connect together



Lightweight for a simple two-person lift



Tough mats support extremely heavy loads



Mats can be joined in fours and lifted via central hooks



Packed in stillages of 25 for safe, efficient storage

APPLICATIONS:

SITE COMPOUNDS
ACCESS ROADS
CAR PARKS
WALKWAYS
PAVEMENT PROTECTION
EVENT FLOORING

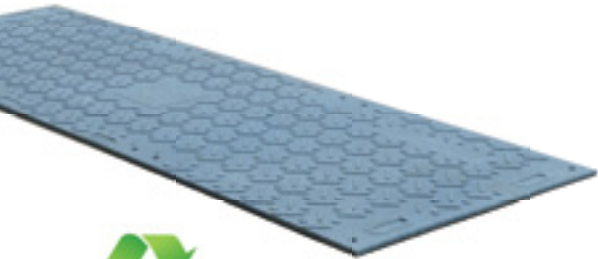
MaxiTrack





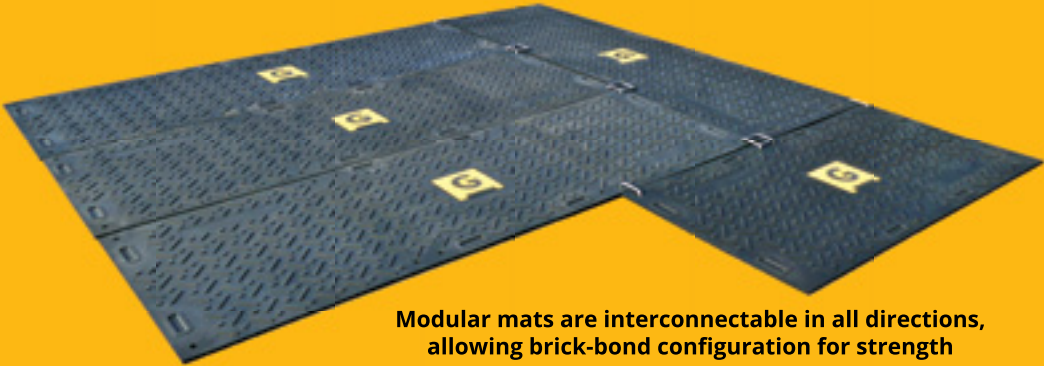
VEHICLE WEIGHT (TONNES) 5 10 20 30 40 50

Ground-Guards introduced the original trackway mats in 2003, and have earned a reputation for supplying the most durable mats available. The range has now been joined by two brand new variants, the metric size M31 and M21 EnviroMats.



These mats have a host of new features:

- Your own company colour logo can be moulded in for instant recognition and permanent identification. Also your contact details
- New 3x1m size gives ultimate ease and cost effectiveness for vehicle trackways
- New 2x1m size is easy to handle, and to transport in smaller vehicles
- New tread patterns for increased grip and greater pedestrian comfort
- Modular 3x1m and 2x1m sizes will interconnect together
- May be used with all existing MultiTrack joiner options



Modular mats are interconnectable in all directions, allowing brick-bond configuration for strength



Moulded logo for easy identification and promotion of your brand



Pedestrian tread on reverse side for comfort and grip

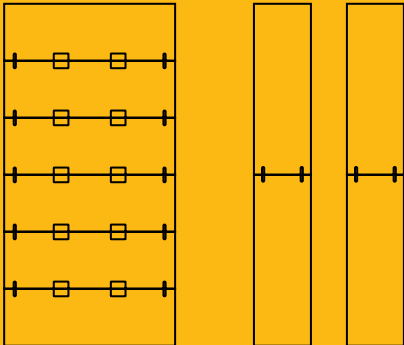


Moulded hand grips without holes, to prevent mud ingress

SPECIFICATIONS

	M31	M21
LENGTH	3000mm	2000mm
WIDTH	1000mm	1000mm
CORE THICKNESS	13mm	13mm (plus treads)
SURFACE AREA	3m ²	2m ²
WEIGHT	39kg	26kg
MATERIAL	HDPE	
SLIP TESTING	BS7976 part 2	
FIRE RATING	UL94HB	
COLOURS	Standard black, bespoke to order	
BRANDING	Bespoke logo and details to order	

The 3x1m size of the new M31 mats is vastly superior to traditional 8'x4' mats for vehicle trackways. They can either be joined sideways to quickly form a solid 3m wide roadway, or used lengthways as a twin trackway, providing an extra 0.6m length per mat. At no extra cost!



VERSATILE

Wide ranging applications including temporary car parks over a stone base, marquee flooring, playgrounds, site walkways, warehouse flooring and livestock flooring.

COST-EFFECTIVE

Economical compared to other systems on the market.

Strong and durable to provide a return on investment.

SAFE

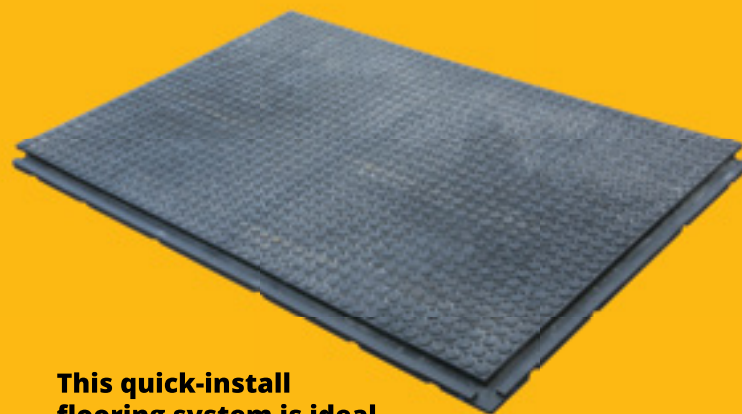
Anti-slip surface eliminates trip hazards.

Interlocking lips enable smooth joins.

Gentle edging ramps provide a safe transition to ground level.

ENVIRONMENTALLY FRIENDLY

Made from 100% recycled PVC.



This quick-install flooring system is ideal for a vast range of applications.

For cost-effective easy to lay flooring, FastCover is a flexible interlocking mat system made out of recycled PVC. These versatile mats can be laid directly onto grass for use as marquee flooring, footpaths and walkways, or over a stone base as a temporary car park surface. They can also be used for temporary protection for paving during site works, or as a permanent flooring system for factories and warehouses. In the agricultural sector FastCover is ideal for equestrian and livestock flooring. Made from 100% recycled PVC, FastCover provides a strong, durable, anti-slip surface at an economical price. The mats have integral interlocking lips to enable smooth joins without trip hazards, and edge ramps provide a gentle transition to ground level.

FC115

Dimensions: 1200 x 800 x 22mm including lips

Surface size: 1160 x 760mm

Surface area: 0.88m²

Weight: 20kg

Tread: Anti-slip

Quantity per pallet: 50

FC102

Dimensions: 1200 x 800 x 43mm including lips

Surface size: 1160 x 760mm

Surface area: 0.88m²

Weight: 32kg

Tread: Anti-slip

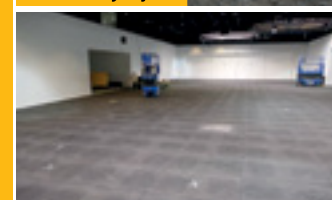
Quantity per pallet: 30



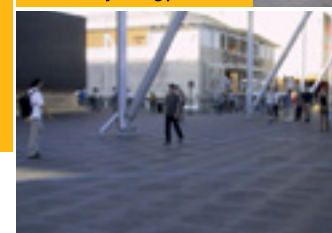
Ideal as a temporary construction site car park



Fast and easy to join



Warehouse flooring protection



The perfect pedestrian walkway



Quality outdoor surfaces created in no time

APPLICATIONS:

WALKWAYS
PAVEMENT PROTECTION
EVENT FLOORING



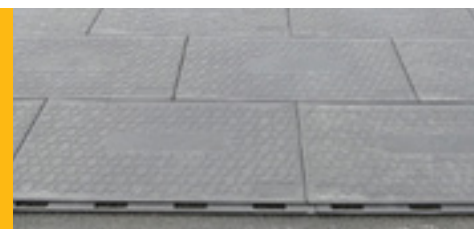


The new **FastCover PLUS** matting system provides extra features for improved usability. These environmentally friendly and cost-effective mats are made in the UK from 100% recycled PVC.

They have inbuilt hand holes and weigh just 14.5kg, making them much easier to handle. Interlocking lugs connect the mats securely together in straight runs or brick-bond pattern, giving a more smooth, firm, and trip-free surface. Their improved ability to accommodate heat expansion makes them ideal for use at events, or for temporary car parks over a stone base.

They are suitable for a wide range of applications including surface protection for block paving or interior floors, temporary flooring for marquees or military shelters, and also for permanent warehouse or livestock flooring.

Advanced flooring system with unique interlocking flanges for improved ease of use and a superior trip-free surface



Mat lugs positively overlap and interlock



Honeycomb underside provides strong support



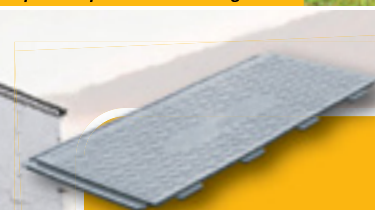
Hand holes make them easy to carry



Mats are simple and quick to connect together



Ideal for marquees and military shelters



DIMENSIONS & WEIGHT

Overall size:	1200 x 600 x 22mm
Surface size:	1160 x 540mm
Surface area:	0.62m ²
Weight:	14.5kg
Quantity per pallet:	70

FastCoverPLUS





VEHICLE WEIGHT (TONNES) 5 10 20 30 40 50 60 70 80 90 100 110 120



UNIQUE CONSTRUCTION

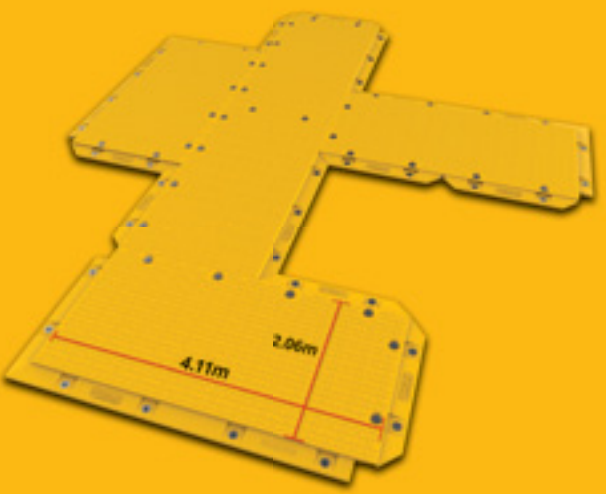
Ultra-tough HDPE plastic outer layer with a hard foam inner core for strength and buoyancy.

BIG

Large 4x2m mats are ideal for big projects and long access roads.

BUOYANT

Their buoyancy means you can make access roads across boggy ground, through swamps, or even floating on water!



XtremeMat is the most advanced and versatile heavy-duty matting system in the world!

Built for use in the harshest of environments, XtremeMats will far outlast timber bogmats, making them a sound investment for long term projects and rental companies. Featuring overlapping flange joints to give total support on soft ground, XtremeMats are connected with special Mega-Thread bolts for easy alignment on undulating sites. These large 4x2m mats can be joined in any direction for maximum versatility on site, and by half overlapping the mats their strength and rigidity is greatly increased.

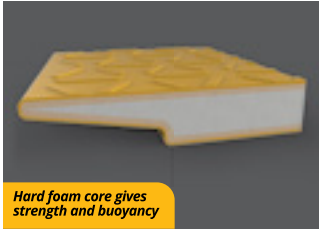
- Material:** HDPE plastic, fully recyclable
- Overall Size:** 4340 x 2290 x 100mm
- Surface Size:** 4110 x 2060mm
- Surface Area:** 8.46m²
- Weight:** 385kg
- Packed in:** 40 mats per 40' ISO container
- Connectors:** 6 self-aligning bolts
- Temperature Rating:** -34°C to +49°C
- Compressional Strength:** 40kg/cm² (600 psi)
- Static Dissipative Protection:** Yes
- UV Protection:** Yes



Mats interlock for extra strength



Ideal for boggy ground



Hard foam core gives strength and buoyancy



Easy to install with grab forks



Overlapping flange joints and Mega-Thread bolts

APPLICATIONS:

- HAUL ROADS
- CRANE ACCESS
- SITE COMPOUNDS
- ACCESS ROADS
- CAR PARKS





VEHICLE WEIGHT (TONNES) 5 10 20 30

BESPOKE

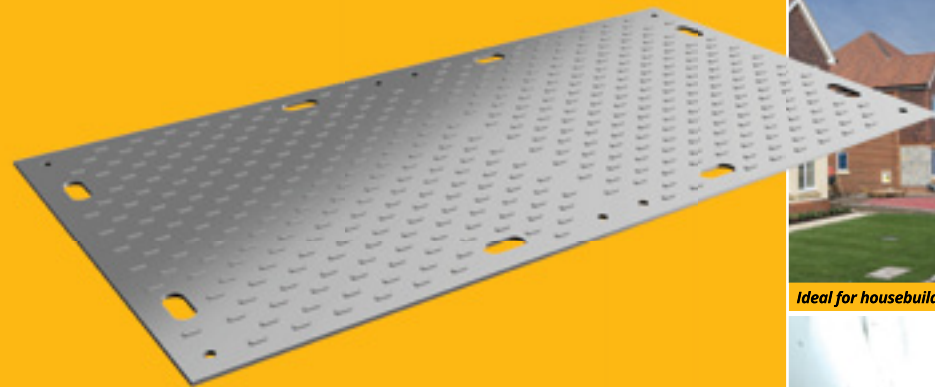
Show off your brand with mats in your own company colour and logo!

VERSATILE

Ideal for a range of medium duty applications.

COST-EFFECTIVE

Attractive bulk buying prices give a great ROI.



Ideal for housebuilding projects

Make a bold statement with ZappMat!

Zapp your brand and get your company noticed every step of the way with the ZappMats range of corporate branded ground mats.

Available to match your own bespoke corporate colour and logo, with a minimum order of just 40 mats, ZappMats are the perfect way to enhance your brand like never before!

Lightweight and portable for ease of handling, ZappMats can be used to create temporary access roads, pedestrian walkways, car parks, event floors, worksite compounds, driveway protection and more.

Make a strong statement with ZappMats today!



Strong tread pattern



Multiple applications

Material: HDPE

Overall Size: 2440 x 1220 x 12mm

Weight: 32kg

Packed in: 30 mats per pallet

Tread: Reversible vehicle/pedestrian

Connectors: Heavy duty plate joiners or standard connectors

Colour: Grey (standard) or bespoke colours and logos to order (minimum 40 mats)



Get your corporate colours noticed!

APPLICATIONS:

EVENT FLOORING
CAR PARKS
WALKWAYS
DRIVEWAY PROTECTION
LANDSCAPE WORKS
ACCESS ROADS

ZappMat





SOLID, YET FLEXIBLE

Flexible ground mats follow ground contours yet are strong enough to protect the surface.

STRONG GRIP

Checker plate tread suitable for pedestrians and vehicles.

COST-EFFECTIVE

Cost-conscious system ideal for temporary construction sites and events. Durable plastic outlasts plywood many times over.

SAFE

Splinter-free, solid plastic creates safer working conditions.

FLEXIBLE JOINING OPTIONS

Multiple holes provide various joining options for additional strength.

ENVIRONMENTALLY FRIENDLY

Made from 100% recycled LDPE plastic.

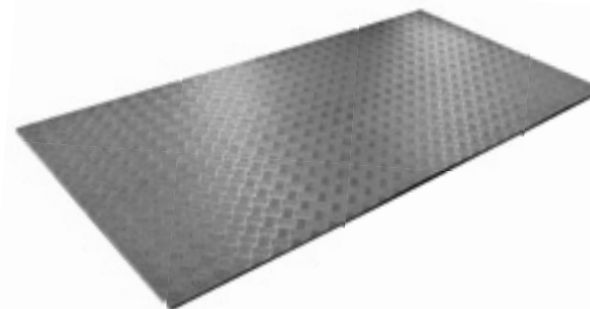
For lighter duty, more flexible applications, LiteTrack and BudgetMat are the cost-effective trackway of choice to safely support vehicles and pedestrians.



APPLICATIONS:
EVENT FLOORING
PITCH PROTECTION
CAR PARKS
PAVEMENT PROTECTION



VEHICLE WEIGHT (TONNES) 5 10



Material: 100% recycled LDPE

Overall Size: 2400 x 1200 x 11mm

Weight: 32kg

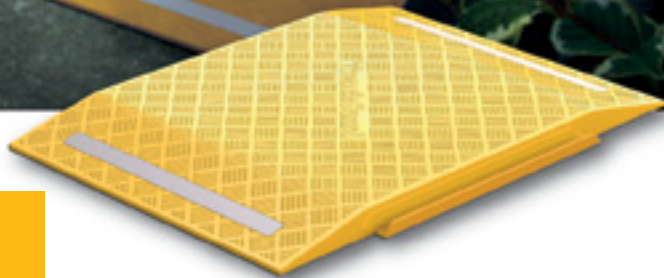
Tread: Checker plate on one side, smooth on the other



LiteTrack



BudgetMat



Material: Ultra strong plastic with a steel reinforced honeycomb structure

Overall Size: 1400 x 800 x 50mm

Weight: 18kg

Installation: Panels interlock without need of specialist joining equipment

Load Strength: Loads of 500kg per wheel over a 600mm trench supported

Tread: High visibility, anti-slip

This pavement trench cover system is safe, strong and sets a new standard in trench care and public safety.

Featuring special interlocking flange joints to eliminate panel movement, an anti-slip tread pattern for extra foot and wheel grip and high visibility reflective strips, TrenchGuard is safe and secure.



Material: High strength composite plastic

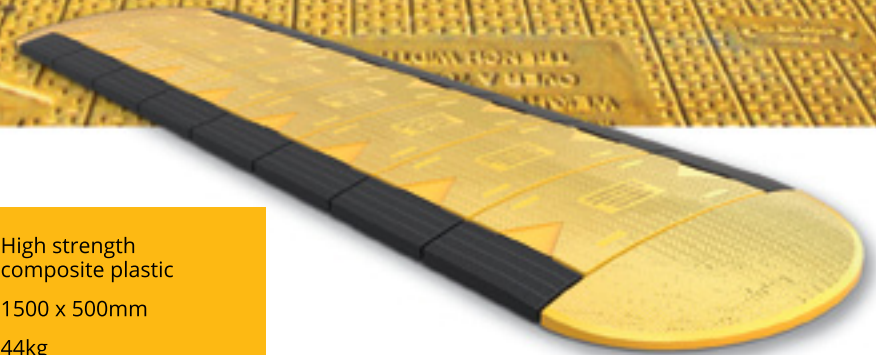
Overall Size: 1500 x 500mm

Weight: 44kg

Installation: Drop pins automatically locate the TrenchPlates over the trench, preventing movement when vehicles are crossing

Load Strength: Loads of 6000kgs over a 700mm trench supported

Tread: High visibility, anti-slip



A modern replacement for traditional highway approved steel road plates, TrenchPlates are easy to install, quieter in use, and not susceptible to metal theft.



PREVENT KERB DAMAGE!

Kerb damage is a serious problem on the majority of housebuilding sites. Many projects allow for the cost of replacing anything from 50% to 100% of the kerbs on site before completion of a housing estate.

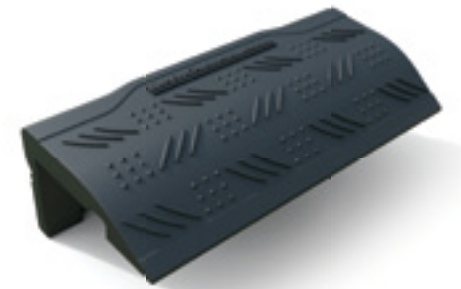
The need to obtain the best ROI in the shortest time tends to encourage the early establishment of street-scene, which makes kerbs more vulnerable to damage from ongoing site traffic. However, the process of removing, replacing, and disposing of damaged kerbs before highway adoption is both expensive and frustrating!

The solution is the brand new KerbGuards system. These re-usable kerb protectors, made from heavy-duty recycled PVC, absorb impacts and shield your kerbs from damage by telehandlers, diggers, dumpers and delivery lorries.

They can be fixed in position by anchor bolts, or simply haunched in with temporary tarmac.

KerbGuards offer a huge saving of time, labour, aggravation and money. It is time to get smart and start using KerbGuards.

**DO IT RIGHT,
DO IT ONCE!**



KG400 for protecting corners and curves



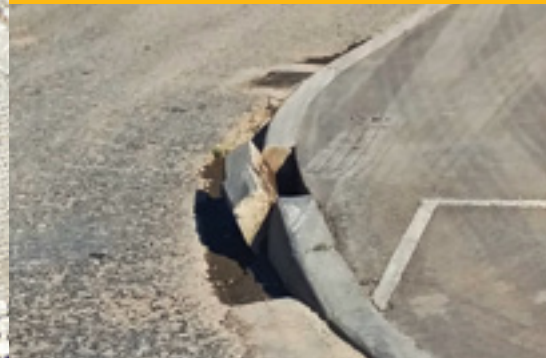
KG900 for straight runs



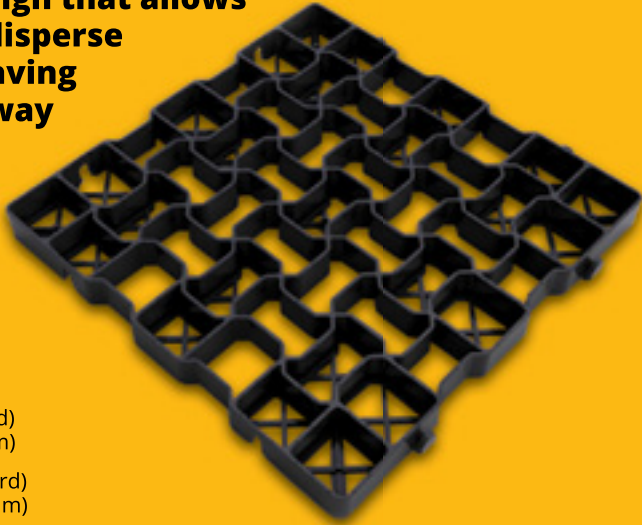
Available in bespoke logos and colours

SPECIFICATIONS

	KG400	KG900
WIDTH	400mm	900mm
HEIGHT	160mm	160mm
DEPTH	200mm	200mm
WEIGHT	3.7kg	8.8kg
COLOUR OPTION	Black/Yellow or Bespoke	
MATERIAL	Recycled PVC	



With a cellular grid design that allows rain or flood water to disperse quickly, the GeoGrid paving system is the durable way to reinforce grass or gravel parking areas.



- Overall Size:** 495 x 495 x 40mm
- Weight:** 1.1kg (Standard)
1.6kg (Premium)
- Point Load:** 25 Tonnes (Standard)
35 Tonnes (Premium)
- Compression Rating:** 350 Tonnes (Standard)
500 Tonnes (Premium)



- Quick and easy to install with simple interlocking design
- Durable and lightweight
- Compression tested up to 500 tonnes per sqm
- Expansion and contraction capability avoids risk of surface deformation in hot or cold temperatures
- Ideal for integration into Sustainable Urban Drainage Systems (SUDS)
- Made from 100% recycled polyethylene
- Available in Premium or Standard options

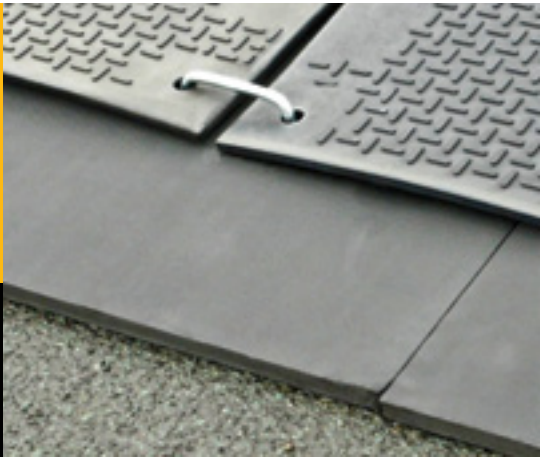


Your first layer of surface protection.

Underlay mats to use beneath temporary trackways such as MultiTrack and MaxiTrack, for protecting paved or Macadam surfaces.

- Super-tough microcellular foam mats
- Lightweight
- Protect sensitive surfaces
- Cushion loadings
- Use with all Ground-Guards trackway systems
- Easy and quick to install

- Overall size:** 1800 x 1200 x 20mm
- Weight:** 8kg



GroundGuards®



Ground-Guards Ltd

Rudgate • Walton
Leeds • LS23 7AU
United Kingdom

+44 (0)113 267 6000
info@ground-guards.co.uk
www.ground-guards.co.uk